



**OBEY**

SPRING 2022  
WOMEN'S COLLECTION

THE OBEY CAMPAIGN CAN BE EXPLAINED AS AN EXPERIMENT IN PHENOMENOLOGY. THE FIRST AIM OF PHENOMENOLOGY IS TO REAWAKEN A SENSE OF WONDER ABOUT ONE'S ENVIRONMENT. THE OBEY CAMPAIGN ATTEMPTS TO STIMULATE CURIOSITY AND BRING PEOPLE TO QUESTION BOTH THE CAMPAIGN AND THEIR RELATIONSHIP WITH THEIR SURROUNDINGS. BECAUSE PEOPLE ARE NOT USED TO SEEING ADVERTISEMENTS OR PROPAGANDA FOR WHICH THE MOTIVE IS NOT OBVIOUS, FREQUENT AND NOVEL ENCOUNTERS WITH OBEY PROPAGANDA PROVOKE THOUGHT AND POSSIBLE FRUSTRATION, NEVERTHELESS REVITALIZING THE VIEWER'S PERCEPTION AND ATTENTION TO DETAIL. TO CATALYZE A THOUGHTFUL DIALOGUE DECONSTRUCTING THE PROCESS OF IMAGE ABSORPTION IS THE ULTIMATE GOAL. ALL IN THE NAME OF FUN AND OBSERVATION.

THE MEDIUM IS THE MESSAGE.



17462 VON KARMAN AVE.  
IRVINE, CA 92614  
U.S.A.  
PHONE 949.596.8400 / FAX 949.596.8437  
[WWW.OBEYCLOTHING.COM](http://WWW.OBEYCLOTHING.COM)  
[WWW.OBEYGIANT.COM](http://WWW.OBEYGIANT.COM)



# TABLE OF CONTENTS



## SPRING 2022

7 SHEPARD FAIREY COLLECTION	16 JACKETS + BOTTOMS	21 TOPS + BOTTOMS + SKIRTS	27 DRESSES
31 SWEATERS	34 KNITS	40 BOTTOMS + SHORTS + SKIRTS	44 SPECIALTY FLEECE
48 SPECIALTY FLEECE SETS	54 UNISEX	72 HEADWEAR + ACCESSORIES	84 PRINTABLE'S

# OBEY

## IDEALS



SUSTAINABLE

ORGANIC

FAIRTRADE

RECYCLED



OBEY is committed to bettering itself in its manufacturing chain both on an environmental level but also with regard to worker's rights. We look at reducing our environmental footprint whenever possible - from choosing sustainable and socially responsible manufacturing techniques to delivering our clothing to you. This is an ongoing challenge and we continue to push ourselves every season to do better. We are constantly exploring new options in the market. In 2015, we started working with Fair Trade to offer certified garments that ensure economic empowerment to factory workers. We have moved to sustainable factories whenever possible and look to industry developments allowing us to use more recycled and renewable materials. These steps are important to our company and are an ongoing process. We respect everything it takes to make the garments we sell and want to ensure we are doing our best for the world around us.

Our IDEALS program highlights the products that are sustainably built, are produced in Fair Trade factories, are made from organic cotton, or are made from recycled fabrics. Look for these icons on select clothing in stores and online. They represent conscious approaches to our production process and are important to the OBEY ethos.

"Social responsibility and justice have always been very important to OBEY in both message and practice. We work with manufacturers that provide a fair wage and ethical working conditions, and have now made the further step to become an official Fair Trade USA partner ([www.FairTradeusa.org](http://www.FairTradeusa.org)). Our Fair Trade Certified™ garments are produced in factories that operate against rigorous social, environmental and economic standards, where workers can do their jobs with pride and dignity. For every Fair Trade Certified product sold, workers earn more money to fight poverty and fund community development.

Our hope is not only to benefit the workers of the Fair Trade factories, but to lead by example and promote the expansion of the Fair Trade apparel program."

- Shepard Fairey

# OBEY IDEALS



This icon indicates that this garment is constructed sustainably. More than just sustainable raw materials, we consider the social environment, and economic impact of its production.



This icon indicates that this garment is constructed with organic cotton. Certified organic cotton following strict regulations without the use of GMO's harmful pesticides, or synthetic fertilizers.



Fair Trade USA's Fair Trade Certified™ label empowers you, the consumer, with the knowledge that your purchase has a positive impact on the people who sew and grow the products you love.

For every OBEY Fair Trade Certified™ product sold, a percentage is paid directly to a special fund for the workers that create our goods. They decide collectively how to spend these funds based on their communities greatest needs: from scholarships, school buses, to medical care, disaster and relief services.



This icon indicates that this garment is constructed with recycled materials. Per t-shirt, 1.6 recycled plastic bottles and .10lbs of recycled cotton are used.

Reduce, Reuse, Recycle!



## FAIRTRADE



Fair Trade is a market-based approach that empowers factory workers and farmers to fight poverty, produce quality products, protect the environment and build strong thriving communities for generations to come. At the same time, Fair Trade USA's Fair Trade Certified™ label empowers you, the consumer, with the knowledge that your purchase has a positive impact on the people who sew and grow the products you love. For every OBEY Fair Trade Certified™ product sold, a percentage is paid directly to a special fund for the workers that create our goods. They decide collectively how to spend these funds based on the community's greatest needs: from scholarships and school buses, to medical care and disaster relief services.





# SHEPARD FAIREY

ARTIST - ACTIVIST

Shepard Fairey, founder of OBEY and OBEY Clothing, was born in Charleston, South Carolina. He received his Bachelor of Fine Arts in Illustration at the Rhode Island School of Design in Providence, Rhode Island. In 1989 he created the "Andre the Giant has a Posse" sticker that transformed into the OBEY GIANT art campaign, with imagery that has changed the way people see art and the urban landscape. After 29 years, his work has evolved into an acclaimed body of art, which includes the 2008 "Hope" portrait of Barack Obama, found at the Smithsonian's National Portrait Gallery. The artist collaborated with Amplifier in 2017 to create the We The People series recognizable during the Women's Marches and other rallies around the world in defense of national and global social justice issues.

Fairey's stickers, guerilla street art presence, and 85 plus public murals are recognizable worldwide. His works are in the permanent collections of the Museum of Modern Art (MoMA), the Victoria and Albert Museum, the Smithsonian's National Portrait Gallery, the Boston Institute of Contemporary Art, the San Francisco Museum of Modern Art, and many others.

Fairey's distinct and recognizable style is unique to him and to OBEY. His lifestyle is the catalyst for all the brand does and the center point of influence and inspiration. This section isolates his work, from his classic graphic style to fine art renderings on garments. Each season, Shepard tackles new ideas and adds his special touch that makes OBEY what it is.

We hope you enjoy.

**OBEY CONFORMITY TRANCE 2**

**263502117**

DESCRIPTION: ORGANIC LIGHTWEIGHT T-SHIRT

CONTENT: 100% ORGANIC COTTON

TURQUOISE TONIC, OFF BLACK, SAGO

XS S M L XL



TURQUOISE TONIC



OFF BLACK



SAGO

D1 - ORGANIC VINTAGE TEE

**OBEY DEFENDERS OF PEACE DOVE**

**263502118**

DESCRIPTION: ORGANIC LIGHTWEIGHT T-SHIRT

CONTENT: 100% ORGANIC COTTON

GINGER BISCUIT, OFF BLACK, TURQUOISE TONIC, SAGO

XS S M L XL



GINGER BISCUIT



OFF BLACK



TURQUOISE TONIC



SAGO

D1 - ORGANIC VINTAGE TEE

**OBEY EYES WIDE OPEN**

**263502119**

DESCRIPTION: ORGANIC LIGHTWEIGHT T-SHIRT

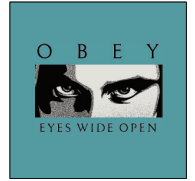
CONTENT: 100% ORGANIC COTTON

OFF BLACK, TURQUOISE TONIC, RABBITS PAW

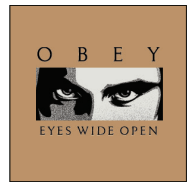
XS S M L XL



OFF BLACK



TURQUOISE TONIC



RABBITS PAW

D1 - ORGANIC VINTAGE TEE

**OBEY LEAF CREST**

**263502120**

DESCRIPTION: ORGANIC LIGHTWEIGHT T-SHIRT

CONTENT: 100% ORGANIC COTTON

SAGO, OFF BLACK, GINGER BISCUIT

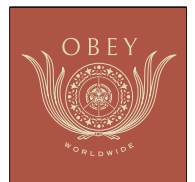
XS S M L XL



SAGO



OFF BLACK



GINGER BISCUIT

D1 - ORGANIC VINTAGE TEE



**OBEY PEACE LEGION**

**263502121**

DESCRIPTION: ORGANIC LIGHTWEIGHT T-SHIRT

CONTENT: 100% ORGANIC COTTON

SAGO, OFF BLACK, TURQUOISE TONIC

XS S M L XL



SAGO



OFF BLACK



TURQUOISE TONIC

D1 - ORGANIC VINTAGE TEE

**OBEY RADICAL PEACE**

**263502122**

DESCRIPTION: ORGANIC LIGHTWEIGHT T-SHIRT

CONTENT: 100% ORGANIC COTTON

RABBITS PAW, TURQUOISE TONIC, SAGO

XS S M L XL



RABBITS PAW



TURQUOISE TONIC



SAGO

D1 - ORGANIC VINTAGE TEE

**OBEY MANDALA STENCIL**

**267292123**

DESCRIPTION: RECYCLED T-SHIRT MADE FROM RECYCLED YARNS

CONTENT: 52% RECYCLED POLYESTER 48% RECYCLED COTTON

BLACK, TEAL, CREAM

XS S M L XL



BLACK



TEAL



CREAM

D1 - SUSTAINABLE TEES

**OBEY WAVE DISTRESS**

**267292124**

DESCRIPTION: RECYCLED T-SHIRT MADE FROM RECYCLED YARNS

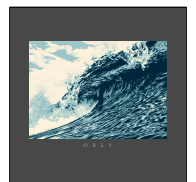
CONTENT: 52% RECYCLED POLYESTER 48% RECYCLED COTTON

WHITE, BLACK, TEAL

XS S M L XL



WHITE



BLACK



TEAL

D1 - SUSTAINABLE TEES

**OBEY JUSTICE ACTIVIST**

**267292125**

DESCRIPTION: RECYCLED T-SHIRT MADE FROM RECYCLED YARNS

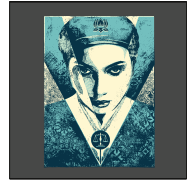
CONTENT: 52% RECYCLED POLYESTER 48% RECYCLED COTTON

CREAM, BLACK, RED

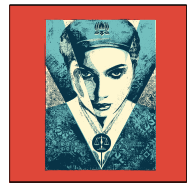
XS S M L XL



CREAM



BLACK



RED

D1 - SUSTAINABLE TEES

**OBEY PEACE LEGION 2**

**267292126**

DESCRIPTION: RECYCLED T-SHIRT MADE FROM RECYCLED YARNS

CONTENT: 52% RECYCLED POLYESTER 48% RECYCLED COTTON

RED, BLACK, WHITE

XS S M L XL



RED



BLACK



WHITE

D1 - SUSTAINABLE TEES

## OBEDI DEFENDERS OF PEACE DOVE 2

267292127

DESCRIPTION: RECYCLED T-SHIRT MADE FROM RECYCLED YARNS

CONTENT: 52% RECYCLED POLYESTER 48% RECYCLED COTTON

WHITE, BLACK, TEAL

XS S M L XL



WHITE



BLACK



TEAL

D1 - SUSTAINABLE TEES

## OBEDI EYES OPEN BANNER

267292128

DESCRIPTION: RECYCLED T-SHIRT MADE FROM RECYCLED YARNS

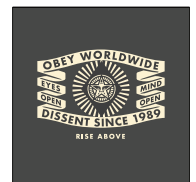
CONTENT: 52% RECYCLED POLYESTER 48% RECYCLED COTTON

TEAL, BLACK, RED

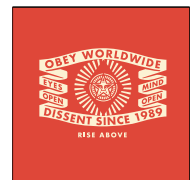
XS S M L XL



TEAL



BLACK



RED

D1 - SUSTAINABLE TEES

**ICON STICKER PACK 2**

**100270001**

DESCRIPTION: ASSORTED STICKERS FOR THE OBEY FIENDS. SPREAD IT!

ASSORTED

O/S



ASSORTED

D1 - ESSENTIALS

**COVERT TO OVERT BOOK**

**326000035M**

DESCRIPTION: COVERT TO OVERT SHOWCASES SHEPARD FAIREY'S EVOLUTION FROM WORKS ON PAPER TO GRANDER ART INSTALLATIONS, CROSS-CULTURAL WORKS, AND MUSIC/ART COLLABORATIONS

ASSORTED

O/S



BLACK

D1 - ESSENTIALS



**JACKETS  
+  
BOTTOMS**



**FLORAL CHORE JACKET**

**221800387**

FIT: REGULAR FIT

DESCRIPTION: CROPPED CHORE JACKET

100% COTTON

BLACK MULTI, WHITE MULTI

**XS S M L XL**



WHITE MULTI

BLACK MULTI

D1 - JACKETS - BOTTOMS

**FLORAL CARPENDER PANT**

**242020088**

DESCRIPTION: PAINTERS PANT

100% COTTON

BLACK MULTI, WHITE MULTI

**24 25 26 27 28 29 30 31 32**



WHITE MULTI

BLACK MULTI

D1 - JACKETS - BOTTOMS

**ALTA CORDUROY JACKET**

**221800388**

FIT: REGULAR FIT

DESCRIPTION: CORDUROY REVERSIBLE VARSITY JACKET

100% COTTON

PINK CLAY, OPAL

**XS S M L XL**



\*REVERSIBLE

\*REVERSIBLE

PINK CLAY

OPAL

D1 - JACKETS - BOTTOMS

**ALTA CORDUROY PANT**

**242000104**

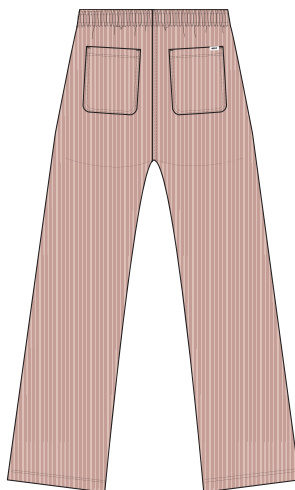
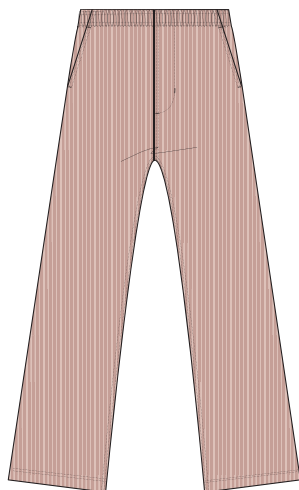
FIT: REGULAR FIT

DESCRIPTION: ELASTIC WAIST CORDUROY PANT

100% COTTON

PINK CLAY, OPAL

**XS S M L XL**



OPAL

PINK CLAY

D1 - JACKETS - BOTTOMS



**TAYLOR DENIM JACKET**

**221800390**

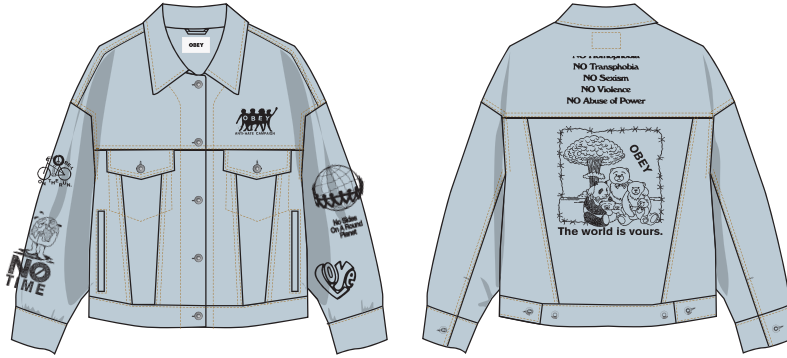
FIT: OVERSIZE FIT

DESCRIPTION: OVERSIZE FIT DENIM JACKET

100% COTTON

BLEACHED INDIGO, DUSTY BLACK

**XS S M L XL**



DUSTY BLACK

BLEACHED INDIGO

D1 - JACKETS - BOTTOMS

**TAYLOR DENIM PANT**

**242010047**

FIT: REGULAR FIT

DESCRIPTION: BOYFRIEND FIT DENIM PANT

100% COTTON

BLEACHED INDIGO, DUSTY BLACK

**24 25 26 27 28 29 30 31 32**



DUSTY BLACK

BLEACHED INDIGO

D1 - JACKETS - BOTTOMS

**TROPHY JACKET**

**221800389**

FIT: OVERSIZE FIT

DESCRIPTION: CROPPED TECHNICAL JACKET

100% NYLON

TURQUOISE TONIC, BLACK

XS S M L XL



BLACK

TURQUOISE TONIC

D1 - JACKETS - BOTTOMS



**TOPS  
+  
BOTTOMS  
+  
SKIRTS**



**BLUEBERRIES RELAXED SHIRT**

**281210103**

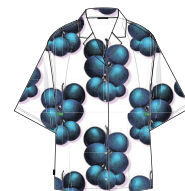
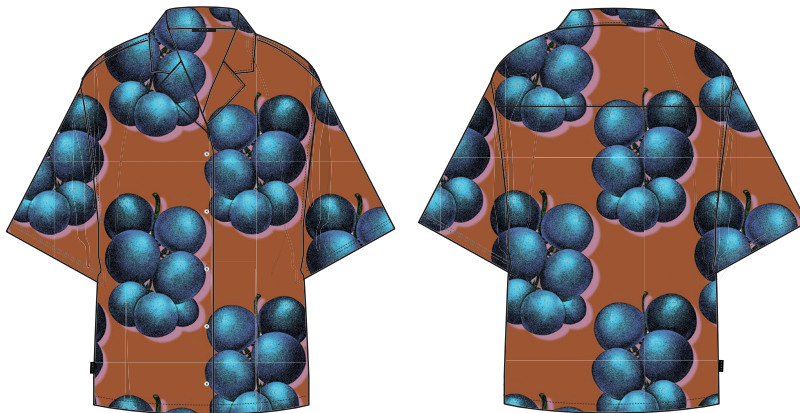
FIT: REGULAR FIT

DESCRIPTION: LOOSE SHIRT WITH PRINT

100% MODAL

BOMBAY BROWN MULTI, WHITE MULTI

XS S M L XL



WHITE MULTI

BOMBAY BROWN MULTI

D1 - TOPS - BOTTOMS - SKIRTS

**BLUEBERRIES PANT**

**242000108**

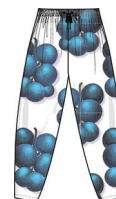
FIT: OVERSIZE FIT

DESCRIPTION: OVERSIZED ELASTIC WAIST PANT

100% MODAL

BOMBAY BROWN MULTI, WHITE MULTI

XS S M L XL



WHITE MULTI

BOMBAY BROWN MULTI

D1 - TOPS - BOTTOMS - SKIRTS

**FISHBOWL RELAXED SHIRT**

**281210104**

FIT: REGULAR FIT

DESCRIPTION: LOOSE SHIRT WITH PRINT

100% MODAL

LAVENDER SILK MULTI, BLACK MULTI

XS S M L XL



BLACK MULTI

LAVENDER SILK MULTI

D1 - TOPS - BOTTOMS - SKIRTS

**FISHBOWL SHORT**

**272120085**

FIT: REGULAR FIT

DESCRIPTION: ELASTIC WAIST CASUAL SHORTS

100% MODAL

LAVENDER SILK MULTI, BLACK MULTI

XS S M L XL



BLACK MULTI

LAVENDER SILK MULTI

D1 - TOPS - BOTTOMS - SKIRTS



**YUDO WORK SHIRT**

**281210102**

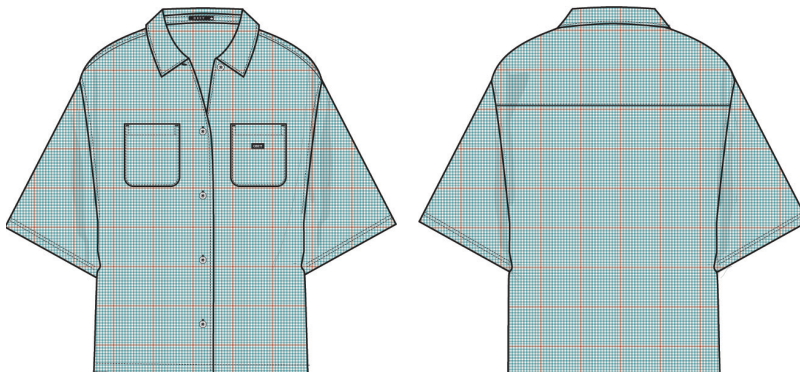
FIT: REGULAR FIT

DESCRIPTION: PRINTED PLAID ON POPLIN WORK SHIRT

64% POLYESTER 34% RAYON 2% SPANDEX

TURQUOISE TONIC MULTI, BLACK MULTI

**XS S M L XL**



BLACK MULTI

TURQUOISE TONIC MULTI

D1 - TOPS - BOTTOMS - SKIRTS

**YUDO PLAID PANT**

**242000106**

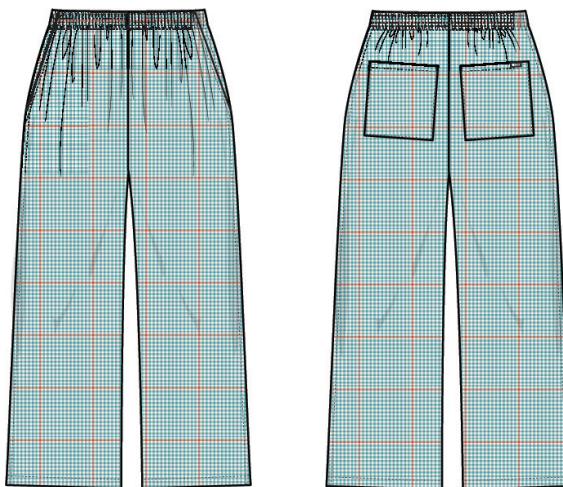
FIT: RELAXED FIT

DESCRIPTION: PLAID PANT

64% POLYESTER 34% RAYON 2% SPANDEX

TURQUOISE TONIC MULTI, BLACK MULTI

**XS S M L XL**



BLACK MULTI

TURQUOISE TONIC MULTI

D1 - TOPS - BOTTOMS - SKIRTS

**MARINO CROPPED TOP**

**284050023**

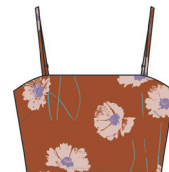
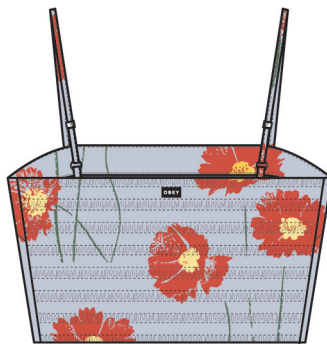
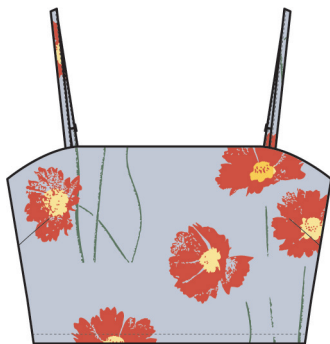
FIT: REGULAR FIT

DESCRIPTION: FITTED STRAP CROPPED TOP W/SMOCKED ELASTIC BACK

100% COTTON

OPAL MULTI, BOMBAY BROWN MULTI

XS S M L XL



BOMBAY BROWN MULTI

OPAL MULTI

D1 - TOPS - BOTTOMS - SKIRTS

**MARINO SHORT**

**272100048**

FIT: OVERSIZE FIT

DESCRIPTION: HI WAIST PLEATED SHORTS

100% COTTON

OPAL MULTI, BOMBAY BROWN MULTI

24 25 26 27 28 29 30 31 32



BOMBAY BROWN MULTI

OPAL MULTI

D1 - TOPS - BOTTOMS - SKIRTS

**CLOT CROPPED TOP**

**281210105**

FIT: CROPPED TOP

DESCRIPTION: SHORT SLEEVE SHIRT IN FITTED CROPPED BODY

100% VISCOSE

BLACK MULTI, PURPLE MULTI

XS S M L XL



PURPLE MULTI

BLACK MULTI

D1 - TOPS - BOTTOMS - SKIRTS

**CLOT SKIRT**

**411550088**

FIT: MIDI FIT

DESCRIPTION: ELASTIC WAIST MIDI SKIRT

100% VISCOSE

BLACK MULTI, PURPLE MULTI

XS S M L XL



PURPLE MULTI

BLACK MULTI

D1 - TOPS - BOTTOMS - SKIRTS



A black and white photograph capturing a scene in a dark interior. In the upper center, a window is partially covered by a large, white, stylized cutout of a human face with prominent features like eyes, nose, and lips. To the right, a person is silhouetted against the light coming from the window, holding a mannequin head on a long pole up to the cutout. The foreground is dominated by a dark, textured surface, possibly a wall or a large piece of furniture. In the lower-left corner, a framed window or display case is visible, containing some indistinct items. The overall mood is mysterious and artistic.

# DRESSES

**SPOTS DRESS**

**401500394**

FIT: FLARE FIT

DESCRIPTION: FIT AND FLARE DRESS WITH SHORT SLEEVE

95% RAYON 5% SPANDEX

BLACK MULTI, OPAL MULTI

XS S M L XL



OPAL MULTI

BLACK MULTI

D1 - DRESSES

**HONEYCOMB DRESS**

**401500390**

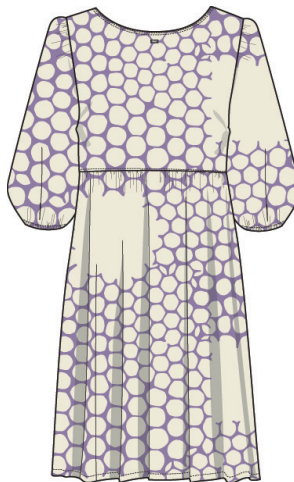
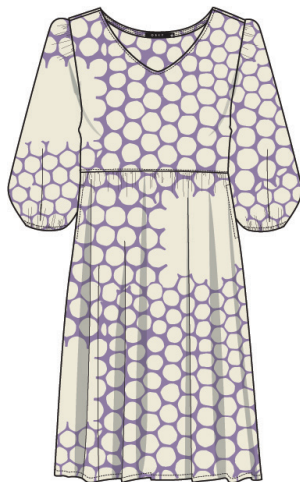
FIT: OVERSIZE FIT

DESCRIPTION: OVERSIZE DRESS WITH PRINT

100% COTTON

UNBLEACHED MULTI, BLACK MULTI

XS S M L XL



BLACK MULTI

UNBLEACHED MULTI

D1 - DRESSES

**REDUX DRESS**

**401500391**

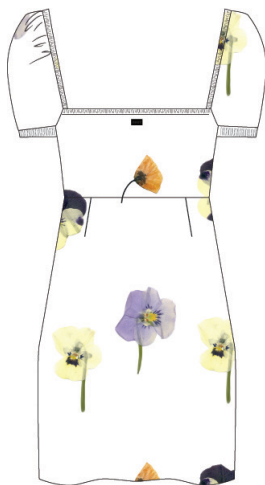
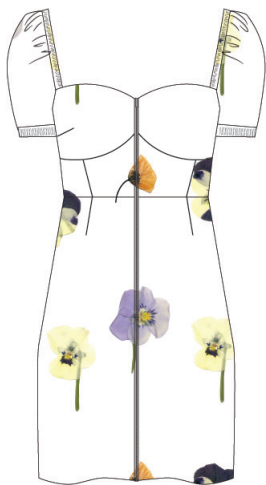
FIT: FITTED FIT

DESCRIPTION: SHORT PUFF SLEEVE DRESS WITH FRONT ZIPPER CLOSURE

100% COTTON

WHITE MULTI, OPAL MULTI

XS S M L XL



OPAL MULTI

WHITE MULTI

D1 - DRESSES

**DELOCATED DRESS**

**401500389**

FIT: MIDI FIT

DESCRIPTION: MIDI WAIST SMOCKED STRAP DRESS

100% VISCOSE

LILAC CHALK MULTI, BLACK MULTI

XS S M L XL



BLACK MULTI

LILAC CHALK MULTI

D1 - DRESSES

**LEAVES WORK DRESS**

**401500392**

FIT: FITTED FIT

DESCRIPTION: DRESS SHORT SLEEVE A-LINE DRESS

98% COTTON 2% SPANDEX

BLACK MULTI, GINGER BISCUIT MULTI

XS S M L XL



GINGER BISCUIT MULTI

BLACK MULTI

D1 - DRESSES

**TARA DRESS**

**401500393**

FIT: BABY DOLL FIT

DESCRIPTION: BABY DOLL DRESS WITH SPAGHETTI STRAP

100% COTTON

ATLANTIC BLUE MULTI, LAVENDER SILK MULTI

XS S M L XL



LAVENDER SILK MULTI

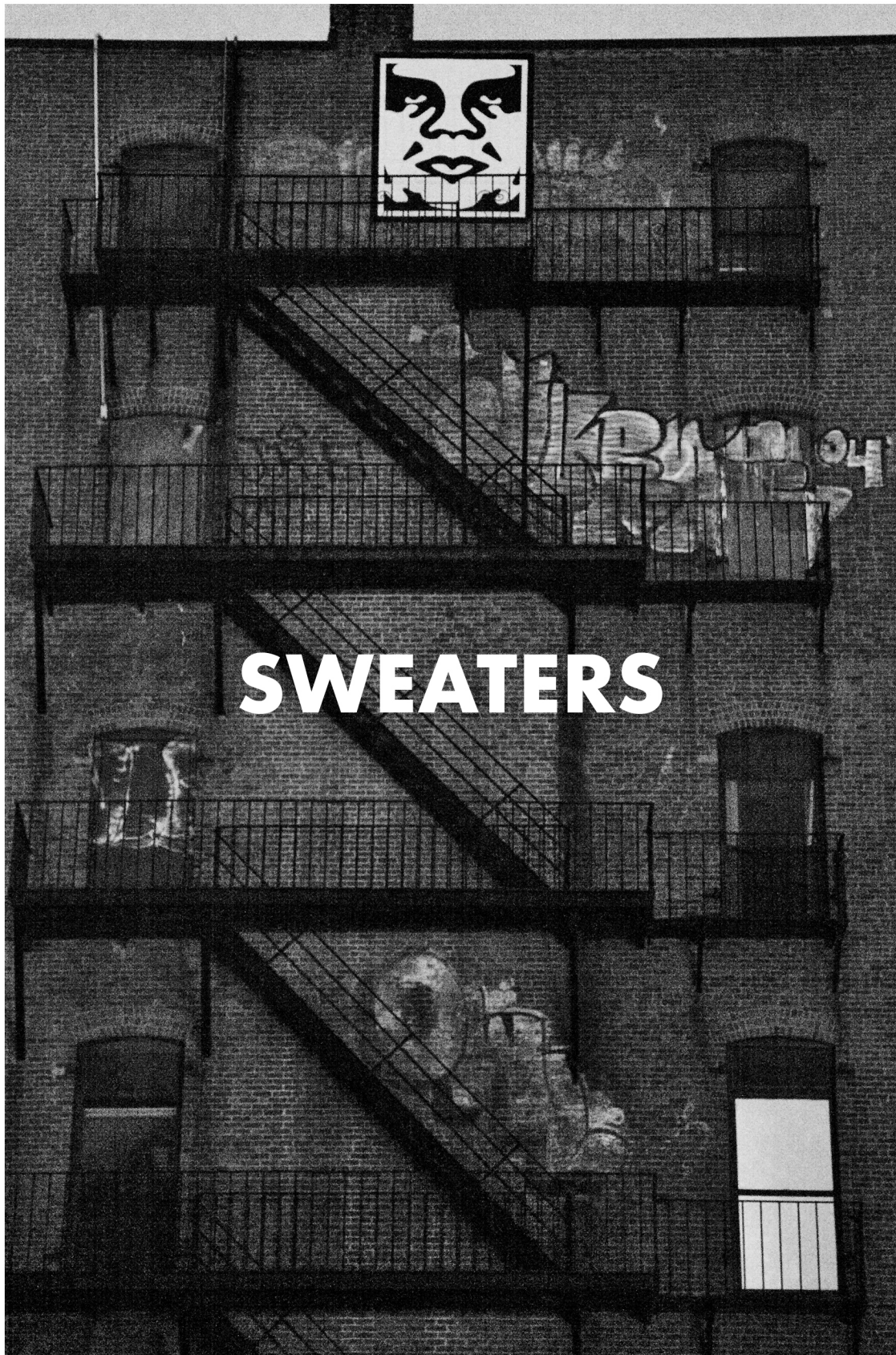
ATLANTIC BLUE MULTI

D1 - DRESSES





# SWEATERS



**EFFECTIVE SWEATER**

**251000103**

FIT: REGULAR FIT

DESCRIPTION: INTARSIA CREW NECK SWEATER

100% COTTON

PINK AMETHYST, UNBLEACHED

**XS S M L XL**



UNBLEACHED

PINK AMETHYST

D1 - SWEATERS

**ERASER CROPPED CARDIGAN**

**251010059**

FIT: REGULAR FIT

DESCRIPTION: STRIPED CROPPED CARDIGAN

100% COTTON

PURPLE PASTE MULTI, PINK CLAY MULTI

**XS S M L XL**



PINK CLAY MULTI

PURPLE PASTE MULTI

D1 - SWEATERS

**POPPY CROPPED CARDIGAN SS**

**251010060**

FIT: REGULAR FIT

DESCRIPTION: CROPPED S/S CARDIGAN

100% COTTON

ALOE GEL, BLACK

**XS S M L XL**



BLACK

ALOE GEL

D1 - SWEATERS

**HELIX SWEATER VEST**

**251810002**

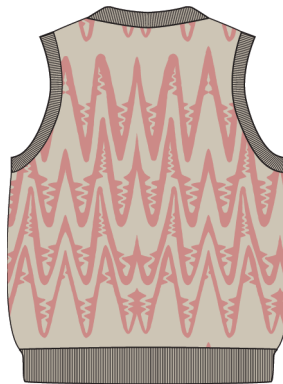
FIT: CROPPED FIT

DESCRIPTION: CROPPED SLEEVELESS SWEATER

100% COTTON

CLAY MULTI, PURE WATER MULTI

**XS S M L XL**



PURE WATER MULTI

CLAY MULTI

D1 - SWEATERS





**KNITS**



**CORRIDOR POLO LS**

**231040006**

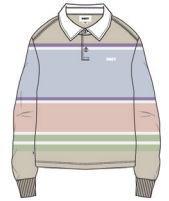
FIT: CROPPED FIT

DESCRIPTION: CROPPED L/S POLO

100% COTTON

DAYLIGHT BLUE MULTI, OPAL MULTI

XS S M L XL



OPAL MULTI

DAYLIGHT BLUE MULTI

D1 - KNITS

**PEMBROKE BOX TEE SS**

**231080132**

FIT: CROPPED FIT

DESCRIPTION: CROPPED STRIPED SS BOX TEE WITH EMBROIDERY

100% COTTON

BLACK MULTI, PINK CLAY MULTI

XS S M L XL



PINK CLAY MULTI

BLACK MULTI

D1 - KNITS

**BRODY BOX TEE SS**

**231080134**

FIT: CROPPED FIT

DESCRIPTION: CROPPED STRIPED SS BOX TEE WITH PRINT

100% COTTON

BUTTER MULTI, LILAC CHALK MULTI

XS S M L XL



LILAC CHALK MULTI

BUTTER MULTI

D1 - KNITS

**SERENE BOX TEE SS**

**231080135**

FIT: CROPPED FIT

DESCRIPTION: CROPPED SS BOX TEE WITH PRINT

100% COTTON

WHITE, OPAL

XS S M L XL



OPAL

WHITE

D1 - KNITS

**JACQUARD FLOWER BOX TEE SS**

**231080131**

FIT: CROPPED FIT

DESCRIPTION: CROPPED JACQUARD SS BOX TEE

100% COTTON

CUCUMBER MULTI, IRIS FLOWER MULTI

XS S M L XL



IRIS FLOWER MULTI

CUCUMBER MULTI

D1 - KNITS

**ALTON CROPPED RINGER TEE SS**

**231080129**

FIT: CROPPED FIT

DESCRIPTION: RINGER STRIPED TEE WITH EMBROIDERY

95% RAYON 5% SPANDEX

BOMBAY BROWN MULTI, PURE WATER MULTI

XS S M L XL



PURE WATER MULTI

BOMBAY BROWN MULTI

D1 - KNITS

**ANDOVER CROPPED RINGER TEE SS**

**231080130**

FIT: SLIM FIT

DESCRIPTION: RINGER POCKET TEE WITH LABEL

60% COTTON 40% MODAL

PURE WATER MULTI, WHITE MULTI

XS S M L XL



WHITE MULTI

PURE WATER MULTI

D1 - KNITS

**GLADE TANK TOP**

**234050121**

FIT: CROPPED FIT

DESCRIPTION: BABY DOLL TANK IN RIB

60% COTTON 40% MODAL

PURPLE PASTE MULTI, OPAL MULTI

XS S M L XL



OPAL MULTI

PURPLE PASTE MULTI

D1 - KNITS

**BISCAYNE TANK TOP**

**234050120**

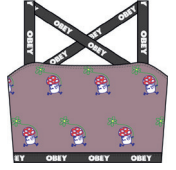
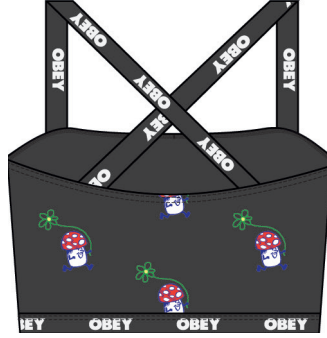
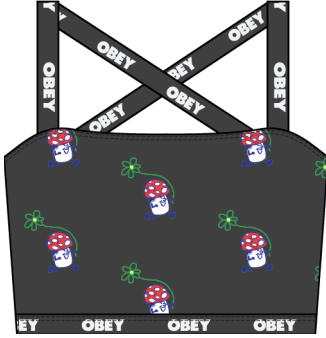
FIT: CROPPED FIT

DESCRIPTION: CROPPED TANK WITH CUSTOM ELASTIC TAPING

95% RAYON 5% SPANDEX

BLACK MULTI, LILAC CHALK MULTI

XS S M L XL



LILAC CHALK MULTI

BLACK MULTI

D1 - KNITS

**BISCAYNE SHORT**

**272120086**

FIT: HIGH WAIST

DESCRIPTION: HI-WAISTED BIKE STYLE SHORT W/ CUSTOM ELASTIC TAPE

95% RAYON 5% SPANDEX

BLACK MULTI, LILAC CHALK MULTI

XS S M L XL

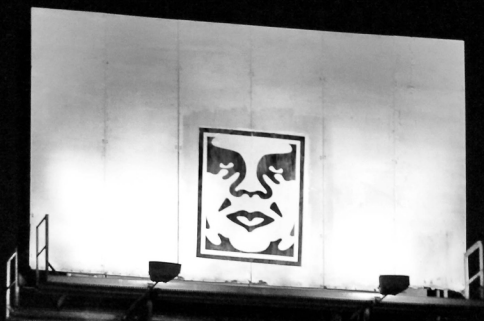


LILAC CHALK MULTI

BLACK MULTI

D1 - KNITS





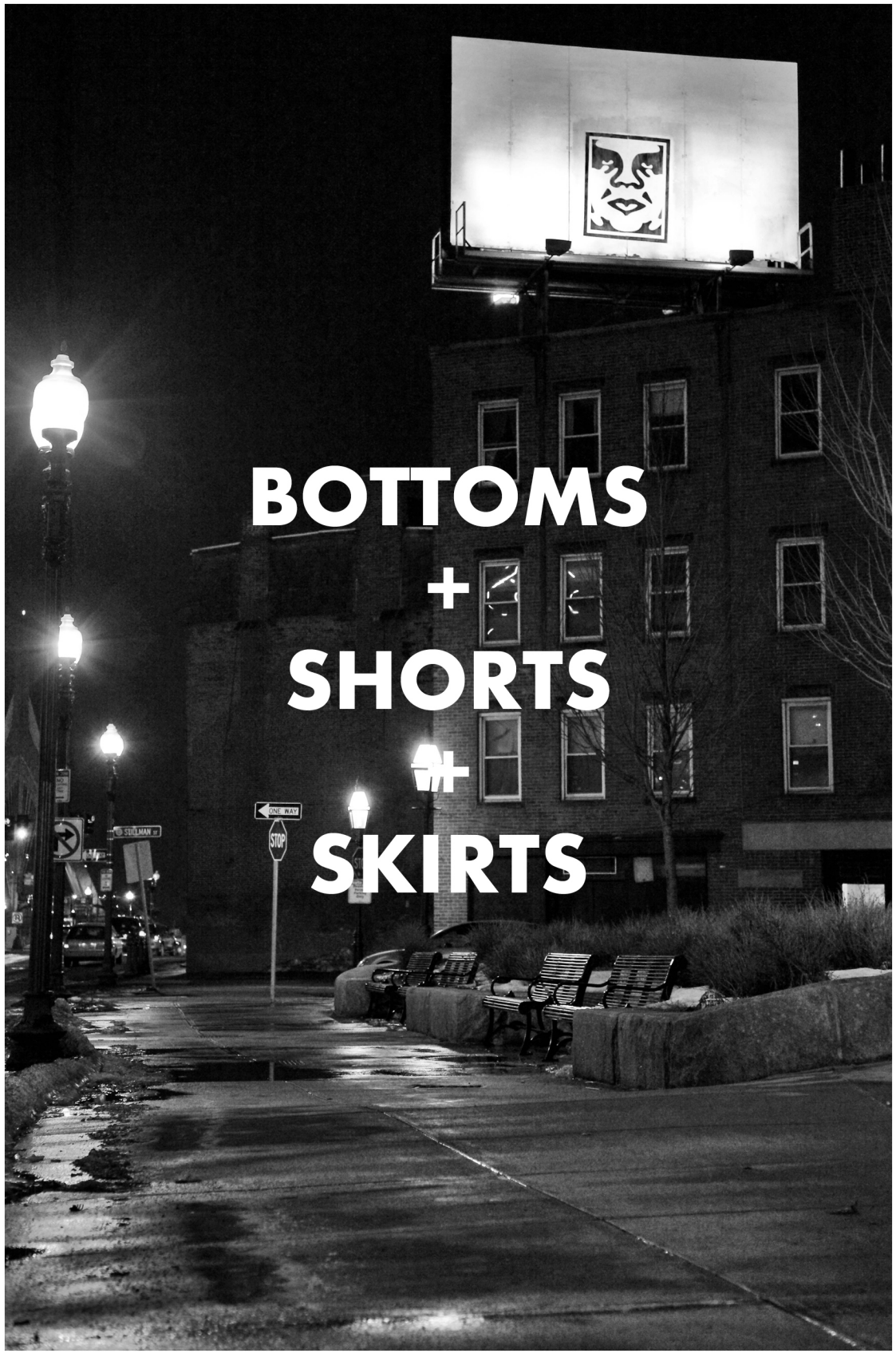
**BOTTOMS**

**+**

**SHORTS**

**+**

**SKIRTS**



**STRAGGLER PEBBLE PANT**

**242020089**

FIT: REGULAR FIT

DESCRIPTION: PRINTED TWILL PANTS

60% COTTON 39% POLY 1% SPANDEX

BLACK MULTI, BOMBAY BROWN MULTI

24 25 26 27 28 29 30 31 32



BOMBAY BROWN MULTI

BLACK MULTI

D1 - BOTTOMS - SHORTS - SKIRTS

**BRIGHTON CARPENTER PANT**

**242020087**

FIT: REGULAR FIT

DESCRIPTION: PAINTERS PANT

100% COTTON

CUCUMBER, PURPLE PASTE

24 25 26 27 28 29 30 31 32



PURPLE PASTE

CUCUMBER

D1 - BOTTOMS - SHORTS - SKIRTS

**SUNNY POPLIN CARGO PANT**

**242000105**

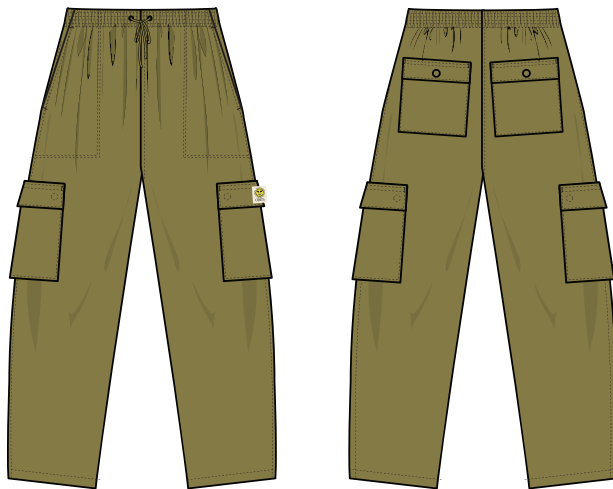
FIT: REGULAR FIT

DESCRIPTION: CARGO PANTS

100% COTTON

OLIVE OIL, BOMBAY BROWN

XS S M L XL



BOMBAY BROWN

OIL OLIVE

D1 - BOTTOMS - SHORTS - SKIRTS

**ASSEMBLAGE PANT**

**242000107**

FIT: REGULAR FIT

DESCRIPTION: OVERSIZED ELASTIC WAIST PANTS

100% MODAL

BLACK MULTI, CUCUMBER MULTI

XS S M L XL



CUCUMBER MULTI

BLACK MULTI

D1 - BOTTOMS - SHORTS - SKIRTS

**EMMA DENIM SHORT**

**272100046**

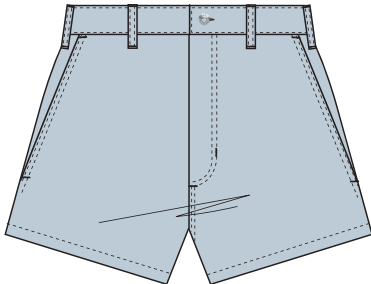
FIT: REGULAR FIT

DESCRIPTION: HIGH WAIST DENIM SHORTS

100% COTTON

BLEACHED INDIGO, FADED BLACK

24 25 26 27 28 29 30 31 32



FADED BLACK

BLEACHED INDIGO

D1 - BOTTOMS - SHORTS - SKIRTS

**STRAGGLER PEBBLE SKIRT**

**411550087**

FIT: REGULAR FIT

DESCRIPTION: PRINTED PEBBLE MINI SKIRT

60% COTTON 39% POLYESTER 1% SPANDEX

BOMBAY BROWN MULTI, BLACK MULTI

24 25 26 27 28 29 30 31 32



BLACK MULTI

BOMBAY BROWN MULTI

D1 - BOTTOMS - SHORTS - SKIRTS





# SPECIALTY FLEECE





**CHARACTER CROPPED CREW**

**211600143**

FIT: REGULAR FIT

DESCRIPTION: CROPPED CREW NECK SWEATSHIRT WITH EMBROIDERY

58% COTTON 42% POLYESTER

BUTTER, CUCUMBER

**XS S M L XL**



**BUTTER**



**CUCUMBER**

D1 - SPECIALTY FLEECE

**PLANTER CROPPED CREW**

**211600144**

FIT: CROPPED FIT

DESCRIPTION: CROPPED CREW NECK SWEATSHIRT WITH EMBROIDERY

58% COTTON 42% POLYESTER

UNBLEACHED, PURPLE PASTE

**XS S M L XL**



**UNBLEACHED**



**PURPLE PASTE**

D1 - SPECIALTY FLEECE

**CHELSEA CREW**

**211600142**

FIT: CROPPED FIT

DESCRIPTION: STRIPE CREWNECK SWEATSHIRT WITH LOGO EMBROIDERY

100% COTTON

DAYLIGHT BLUE MULTI, CLAY MULTI

XS S M L XL



CLAY MULTI

DAYLIGHT BLUE MULTI

D1 - SPECIALTY FLEECE

**BUBBLE CROPPED HOOD**

**211610110**

FIT: CROPPED FIT

DESCRIPTION: CROPPED HOODED SWEATSHIRT WITH EMBROIDERY

58% COTTON 42% POLYESTER

BLACK, UNBLEACHED

XS S M L XL



UNBLEACHED

BLACK

D1 - SPECIALTY FLEECE

**SUNSHINE HOOD**

**211610111**

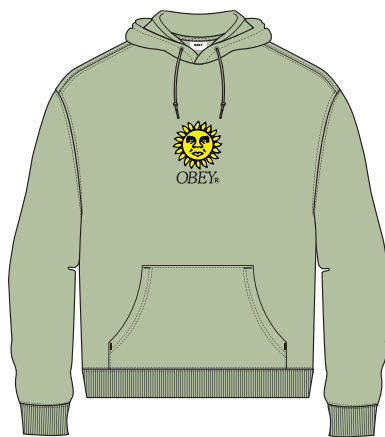
FIT: REGULAR FIT

DESCRIPTION: HOODED SWEATSHIRT WITH OBEY EMBROIDERY

58% COTTON 42% POLYESTER

CUCUMBER, UNBLEACHED

**XS S M L XL**



CUCUMBER



UNBLEACHED

D1 - SPECIALTY FLEECE

**BOX HOOD**

**211610109**

FIT: REGULAR FIT

DESCRIPTION: HOODED SWEATSHIRT WITH OBEY EMBROIDERY

58% COTTON 42% POLYESTER

PURPLE PASTE, BLACK

**XS S M L XL**



PURPLE PASTE



BLACK

D1 - SPECIALTY FLEECE



# SPECIALTY FLEECE SETS

**BOLD CROPPED HOOD**

**211610097**

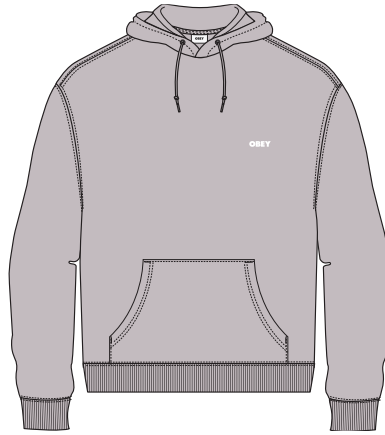
FIT: CROPPED FIT

DESCRIPTION: HOODED SWEATSHIRT WITH OBEY EMBROIDERY

58% COTTON 42% POLYESTER

PURPLE PASTE, BLACK

**XS S M L XL**



PURPLE PASTE



BLACK

D1 - SPECIALTY FLEECE SETS

**BOLD SWEATPANT**

**242030032**

FIT: REGULAR FIT

DESCRIPTION: REGULAR FIT SWEATPANT WITH EMBROIDERY

58% COTTON 42% POLYESTER

PURPLE PASTE, BLACK

**XS S M L XL**



PURPLE PASTE



BLACK

D1 - SPECIALTY FLEECE SETS



**LIMITLESS HOOD**

**211610114**

FIT: REGULAR FIT

DESCRIPTION: HOODED SWEATSHIRT WITH EMBROIDERY

80% COTTON 20% POLYESTER

PINK AMYTHEIST MULTI, ALOE GEL MULTI

**XS S M L XL**



PINK AMYTHEIST MULTI



ALOE GEL MULTI

D1 - SPECIALTY FLEECE SETS

**LIMITLESS SWEATPANT**

**242030035**

FIT: REGULAR FIT

DESCRIPTION: REGULAR FIT SWEATPANT WITH EMBROIDERY

80% COTTON 20% POLYESTER

PINK AMYTHEIST MULTI, ALOE GEL MULTI

**XS S M L XL**



PINK AMYTHEIST MULTI



ALOE GEL MULTI

D1 - SPECIALTY FLEECE SETS

**LOCKDOWN HOOD**

**211610108**

FIT: REGULAR FIT

DESCRIPTION: COLOR BLOCKED HOOD WITH LOGO EMBROIDERY

100% COTTON

OPAL MULTI

XS S M L XL



OPAL MULTI

D1 - SPECIALTY FLEECE SETS

**LOCKDOWN II SWEATPANT**

**242030031**

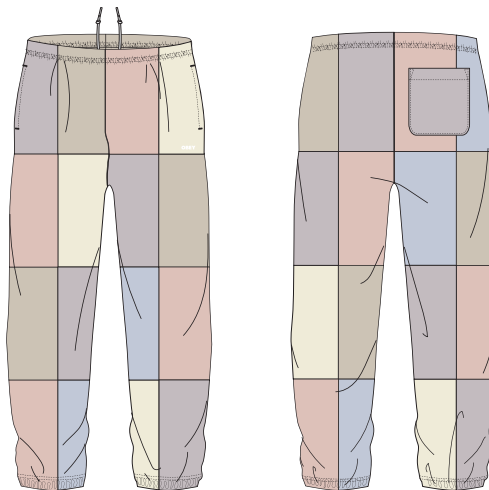
FIT: REGULAR FIT

DESCRIPTION: COLOR BLOCK FLEECE PANTS

100% COTTON

OPAL MULTI

XS S M L XL



OPAL MULTI

D1 - SPECIALTY FLEECE SETS

**FRIDAY HOOD**

**211610113**

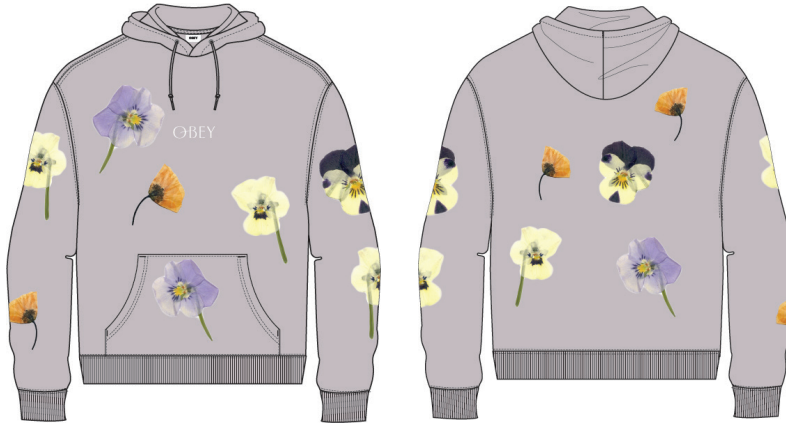
FIT: REGULAR FIT

DESCRIPTION: HOODED SWEATSHIRT WITH PRINT & EMBROIDERY

58% COTTON 42% POLYESTER

PURPLE PASTE, ASH GREY

**XS S M L XL**



ASH GREY

PURPLE PASTE

D1 - SPECIALTY FLEECE SETS

**FRIDAY SWEATPANT**

**242030034**

FIT: REGULAR FIT

DESCRIPTION: REGULAR FIT SWEATPANT WITH PRINT AND EMBROIDERY

58% COTTON 42% POLYESTER

PURPLE PASTE, ASH GREY

**XS S M L XL**



ASH GREY

PURPLE PASTE

D1 - SPECIALTY FLEECE SETS

**AMY HOOD**

**211610112**

FIT: REGULAR FIT

DESCRIPTION: HOODED SWEATSHIRT WITH PUFF PRINT

58% COTTON 42% POLYESTER

BLACK, CUCUMBER

**XS S M L XL**



CUCUMBER

BLACK

D1 - SPECIALTY FLEECE SETS

**AMY SWEATPANT**

**242030033**

FIT: REGULAR FIT

DESCRIPTION: REGULAR FIT SWEATPANT WITH PUFF PRINT

58% COTTON 42% POLYESTER

BLACK, CUCUMBER

**XS S M L XL**



CUCUMBER

BLACK

D1 - SPECIALTY FLEECE SETS



# UNISEX





**HARPER SUIT JACKET**

**121800493**

FIT: REGULAR FIT

DESCRIPTION: STRIPED SEERSUCKER SUIT JACKET

65% POLYESTER 35% COTTON

BLACK, IRIS

XS S M L XL XXL



BLACK



IRIS

D1 - MATCHING SETS

**HARPER PANT**

**142020197**

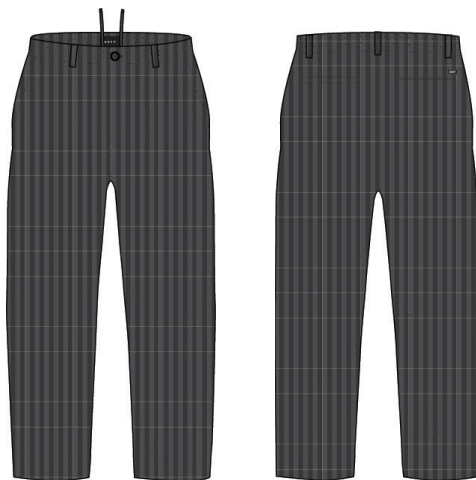
FIT: REGULAR FIT

DESCRIPTION: SEERSUCKER ELASTIC PANT WITH BUTTON CLOSURE

65% POLYESTER 35% COTTON

BLACK, IRIS

XS S M L XL XXL



BLACK



IRIS

D1 - MATCHING SETS

\*PLEASE NOTE UNISEX STYLES ARE SIZED IN MEN'S SIZING\*

\*PLEASE NOTE UNISEX STYLES ARE SIZED IN MEN'S SIZING\*

**POLLEN JACKET**

\*PLEASE NOTE UNISEX STYLES ARE SIZED IN MEN'S SIZING\*

**121800494**

FIT: CLASSIC FIT

DESCRIPTION: PRINTED TWILL JACKET WITH OBEY LABEL

100% COTTON

DAYLIGHT BLUE MULTI, UNBLEACHED MULTI

XS S M L XL XXL



UNBLEACHED MULTI

DAYLIGHT BLUE MULTI

D1 - MATCHING SETS

**POLLEN PANT**

\*PLEASE NOTE UNISEX STYLES ARE SIZED IN MEN'S SIZING\*

**142020199**

FIT: RELAXED FIT

DESCRIPTION: PRINTED TWILL PATCH POCKET PANT

100% COTTON

DAYLIGHT BLUE MULTI, UNBLEACHED MULTI

26 27 28 29 30 31 32 33 34 36 38



UNBLEACHED MULTI

DAYLIGHT BLUE MULTI

D1 - MATCHING SETS

**DIBBS JACKET**

**121800499**

FIT: REGULAR FIT

DESCRIPTION: CORDUROY ZIP JACKET WITH LOGO EMBROIDERY

100% COTTON

OLIVE OIL, LILAC CHALK

**XS S M L XL XXL**

\*PLEASE NOTE UNISEX STYLES ARE SIZED IN MEN'S SIZING\*



OLIVE OIL



LILAC CHALK

D1 - MATCHING SETS

**EASY CORD PANT**

**142020195**

FIT: RELAXED FIT

DESCRIPTION: WIDE WALE ELASTIC CORDUROY PANT

100% COTTON

OLIVE OIL, LILAC CHALK

**XS S M L XL XXL**

\*PLEASE NOTE UNISEX STYLES ARE SIZED IN MEN'S SIZING\*



OLIVE OIL



LILAC CHALK

D1 - MATCHING SETS

**ESTATE JACKET**

**121800501**

FIT: REGULAR FIT

DESCRIPTION: TWILL CHORE COAT WITH EYES LABEL

100% COTTON

BLACK, WAVELITE, CLAY

XS S M L XL XXL

\*PLEASE NOTE UNISEX STYLES ARE SIZED IN MEN'S SIZING\*



BLACK



WAVELITE



CLAY

D1 - MATCHING SETS

**ESTATE PANT**

**142020183**

FIT: RELAXED FIT

DESCRIPTION: HEAVYWEIGHT TWILL PANT WITH SINGLE PLEAT FRONT

100% COTTON

BLACK, WAVELITE, CLAY

26 27 28 29 30 31 32 33 34 36 38

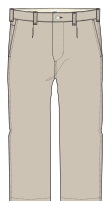
\*PLEASE NOTE UNISEX STYLES ARE SIZED IN MEN'S SIZING\*



BLACK



WAVELITE



CLAY

D1 - MATCHING SETS

**TURNER JACKET**

**121800502**

FIT: REGULAR FIT

DESCRIPTION: CANVAS ZIP JACKET WITH OBEY LABEL

100% COTTON

UNBLEACHED, BLACK

XS S M L XL XXL

\*PLEASE NOTE UNISEX STYLES ARE SIZED IN MEN'S SIZING\*



BLACK

UNBLEACHED

D1 - MATCHING SETS

**TURNER PANT**

**142020194**

FIT: RELAXED FIT

DESCRIPTION: DOUBLE KNEE WORK PANTS WITH PATCH POCKETS

100% COTTON

UNBLEACHED, BLACK

26 27 28 29 30 31 32 33 34 36 38

\*PLEASE NOTE UNISEX STYLES ARE SIZED IN MEN'S SIZING\*



black

UNBLEACHED

D1 - MATCHING SETS



**DISCLOSE JACKET**

\*PLEASE NOTE UNISEX STYLES ARE SIZED IN MEN'S SIZING\*

**121800500**

FIT: REGULAR FIT

DESCRIPTION: RIPSTOP JACKET WITH SNAPS

100% COTTON

BLACK, FIELD GREEN

XS S M L XL XXL



FIELD GREEN

BLACK

D1 - JACKETS

**SAUCER JACKET**

\*PLEASE NOTE UNISEX STYLES ARE SIZED IN MEN'S SIZING\*

**121800503**

FIT: REGULAR FIT

DESCRIPTION: TWILL COACH JACKET WITH CONTRAST LINING AND PRINT

100% COTTON

LEAF, BLACK

XS S M L XL XXL



BLACK

LEAF

D1 - JACKETS

CHERUB JACKET

\*PLEASE NOTE UNISEX STYLES ARE SIZED IN MEN'S SIZING\*

121800498

FIT: REGULAR FIT

DESCRIPTION: TWILL VARSITY WITH EMBROIDERIES

100% COTTON

BLACK, PURPLE PASTE

XS S M L XL XXL



PURPLE PASTE

BLACK

D1 - JACKETS

**QUARTET ORGANIC CREW**

**112480116**

FIT: REGULAR FIT

DESCRIPTION: ORGANIC FRENCH TERRY CREWNECK

100% ORGANIC COTTON

NAVY MULTI, RABBITS PAW MULTI

XS S M L XL XXL



NAVY MULTI

D1 - SPECIALTY FLEECE

\*PLEASE NOTE UNISEX STYLES ARE SIZED IN MEN'S SIZING\*



RABBITS PAW MULTI

**LOOPER POLO LS**

**111620075**

FIT: REGULAR FIT

DESCRIPTION: POP OVER COLLARED KNIT

100% COTTON

CUCUMBER, PURPLE PASTE

XS S M L XL XXL



CUCUMBER

D1 - SPECIALTY FLEECE

\*PLEASE NOTE UNISEX STYLES ARE SIZED IN MEN'S SIZING\*



PURPLE PASTE

**BOLD RECYCLED HOOD**

**112470160**

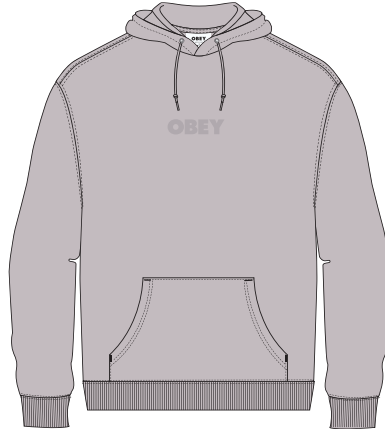
FIT: REGULAR FIT

DESCRIPTION: HOODED SWEATSHIRT MADE FROM RECYCLED FIBERS WITH LOGO EMBROIDERY

73% RECYCLED COTTON 27% RECYCLED POLYESTER

PIGMENT PURPLE PASTE, PIGMENT CUCUMBER, PIGMENT BUTTER

XS S M L XL XXL



PIGMENT PURPLE PASTE



PIGMENT CUCUMBER



PIGMENT BUTTER

D1 - RECYCLED SUSTAINABLE

\*PLEASE NOTE UNISEX STYLES ARE SIZED IN MEN'S SIZING\*

**BOLD RECYCLED CREW**

**112480115**

FIT: REGULAR FIT

DESCRIPTION: CREW NECK SWEATSHIRT MADE FROM RECYCLED FIBERS WITH LOGO EMBROIDERY

73% RECYCLED COTTON 27% RECYCLED POLYESTER

PIGMENT CUCUMBER, PIGMENT PURPLE PASTE, PIGMENT BUTTER

XS S M L XL XXL



PIGMENT CUCUMBER



PIGMENT PURPLE PASTE



PIGMENT BUTTER

D1 - RECYCLED SUSTAINABLE

\*PLEASE NOTE UNISEX STYLES ARE SIZED IN MEN'S SIZING\*

**TIMELESS RECYCLED HEAVYWEIGHT HOOD**

**112470159**

FIT: REGULAR FIT

DESCRIPTION: RECYCLED HEAVY WEIGHT HOOD WITH OBEY BRANDING

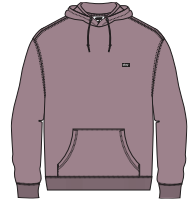
73% RECYCLED COTTON 27% RECYCLED POLYESTER

TURQUOISE TONIC PIGMENT, LILAC CHALK PIGMENT, RABBITS PAW PIGMENT

XS S M L XL XXL



TURQUOISE TONIC PIGMENT



LILAC CHALK PIGMENT



RABBITS PAW PIGMENT

D1 - RECYCLED SUSTAINABLE

\*PLEASE NOTE UNISEX STYLES ARE SIZED IN MEN'S SIZING\*

**TIMELESS RECYCLED HEAVYWEIGHT CREW**

**112480114**

FIT: REGULAR FIT

DESCRIPTION: RECYCLED HEAVY WEIGHT CREW WITH OBEY BRANDING

73% RECYCLED COTTON 27% RECYCLED POLYESTER

RABBITS PAW PIGMENT, TURQUOISE TONIC PIGMENT, LILAC CHALK PIGMENT

XS S M L XL XXL



RABBITS PAW PIGMENT



TURQUOISE TONIC PIGMENT



LILAC CHALK PIGMENT

D1 - RECYCLED SUSTAINABLE

\*PLEASE NOTE UNISEX STYLES ARE SIZED IN MEN'S SIZING\*



**STRAGGLER PANT**

**142020150**

FIT: STANDARD FIT

DESCRIPTION: STRAIGHT LEG PANT

60% COTTON 39% POLYESTER 1% SPANDEX

SEPIA BROWN, BLACK, LEAF

26 27 28 29 30 31 32 33 34 36 38

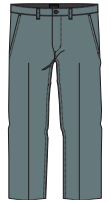
\*PLEASE NOTE UNISEX STYLES ARE SIZED IN MEN'S SIZING\*



SEPIA BROWN



BLACK



LEAF

D1 - BOTTOMS

**STRAGGLER FLOODED PANT**

**142020113**

FIT: STANDARD FIT

DESCRIPTION: FLOODED PANT

60% COTTON 39% POLYESTER 1% SPANDEX

BLACK, SEPIA BROWN, LEAF

26 27 28 29 30 31 32 33 34 36 38

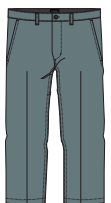
\*PLEASE NOTE UNISEX STYLES ARE SIZED IN MEN'S SIZING\*



BLACK



SEPIA BROWN



LEAF

D1 - BOTTOMS

**HUGHES TWILL PANT**

**142020198**

FIT: REGULAR FIT

DESCRIPTION: CASUAL TWILL PANT

100% COTTON

DULL BLUE, BLACK, FIELD GREEN

26 27 28 29 30 31 32 33 34 36 38



DULL BLUE



BLACK



FIELD GREEN

D1 - BOTTOMS

\*PLEASE NOTE UNISEX STYLES ARE SIZED IN MEN'S SIZING\*

**HARDWORK CARPENTER PANT**

**142020184**

FIT: REGULAR FIT

DESCRIPTION: CARPENTER PANT

100% COTTON

WHITE, BLACK, LEAF

26 27 28 29 30 31 32 33 34 36 38



WHITE



BLACK



LEAF

D1 - BOTTOMS

\*PLEASE NOTE UNISEX STYLES ARE SIZED IN MEN'S SIZING\*

**EASY TWILL PANT**

**142020142**

FIT: RELAXED FIT

DESCRIPTION: ELASTIC WAIST TWILL PANT

100% COTTON

GINGER BISCUIT, BLACK, FIELD GREEN

XS S M L XL XXL

\*PLEASE NOTE UNISEX STYLES ARE SIZED IN MEN'S SIZING\*



GINGER BISCUIT



BLACK



FIELD GREEN

D1 - BOTTOMS

**EASY RIPSTOP CARGO PANT**

**142020196**

FIT: RELAXED FIT

DESCRIPTION: ELASTIC WAIST RIPSTOP CARGO PANT

100% COTTON

BLACK, FIELD GREEN, LIGHT KHAKI

XS S M L XL XXL

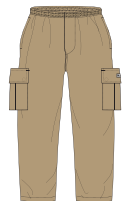
\*PLEASE NOTE UNISEX STYLES ARE SIZED IN MEN'S SIZING\*



BLACK



FIELD GREEN



LIGHT KHAKI

D1 - BOTTOMS

**OBEY DREAM JACKET**

\*PLEASE NOTE UNISEX STYLES ARE SIZED IN MEN'S SIZING\*

**121800497**

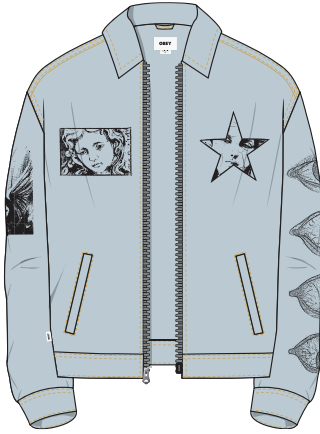
FIT: REGULAR FIT

DESCRIPTION: PRINTED DENIM ZIP JACKET

100% COTTON

LIGHT INDIGO, DUSTY BLACK

XS S M L XL XXL



DUSTY BLACK

LIGHT INDIGO

D1 - DENIM COLLECTION

**HARD WORK DREAMS DENIM**

\*PLEASE NOTE UNISEX STYLES ARE SIZED IN MEN'S SIZING\*

**142010081**

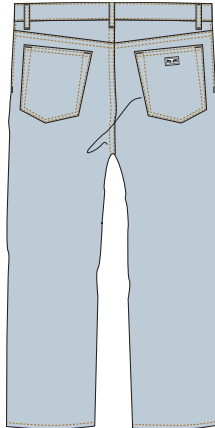
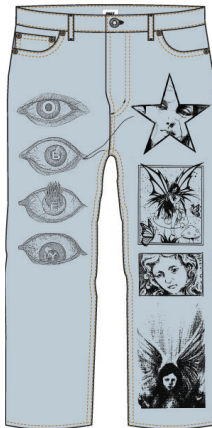
FIT: RELAXED FIT

DESCRIPTION: RELAXED FIT BUTTON FLY DENIM WITH EYES LABELING

100% COTTON

LIGHT INDIGO, DUSTY BLACK

26 27 28 29 30 31 32 33 34 36 38



DUSTY BLACK

LIGHT INDIGO

D1 - DENIM COLLECTION

**FUBAR PLEATED DENIM**

\*PLEASE NOTE UNISEX STYLES ARE SIZED IN MEN'S SIZING\*

**142010082**

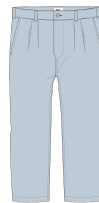
FIT: RELAXED FIT

DESCRIPTION: DENIM SHACKET WITH BELLOWED POCKETS

100% COTTON

FADED BLACK, LIGHT INDIGO

**XS S M L XL XXL**



LIGHT INDIGO

FADED BLACK

D1 - DENIM COLLECTION

**EASY DENIM PANT**

\*PLEASE NOTE UNISEX STYLES ARE SIZED IN MEN'S SIZING\*

**142010079**

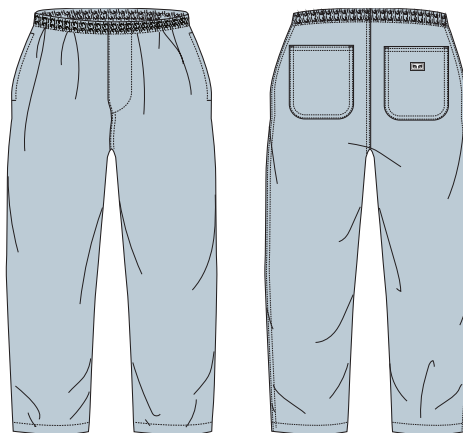
FIT: RELAXED FIT

DESCRIPTION: ELASTIC WAIST PATCH POCKET DENIM PANT

100% COTTON

LIGHT INDIGO, FADED BLACK

**XS S M L XL XXL**



FADED BLACK

LIGHT INDIGO

D1 - DENIM COLLECTION



**HARDWORK DENIM**

\*PLEASE NOTE UNISEX STYLES ARE SIZED IN MEN'S SIZING\*

**142010077**

FIT: RELAXED FIT

DESCRIPTION: RELAXED FIT BUTTON FLY DENIM WITH EYES LABELING

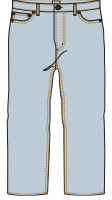
100% COTTON

STONEWASH INDIGO, LIGHT INDIGO, FADED BLACK

26 27 28 29 30 31 32 33 34 36 38



STONEWASH INDIGO



LIGHT INDIGO



FADED BLACK

D1 - DENIM COLLECTION

**HARDWORK CARPENTER DENIM**

\*PLEASE NOTE UNISEX STYLES ARE SIZED IN MEN'S SIZING\*

**142010078**

FIT: RELAXED FIT

DESCRIPTION: DENIM CARPENTER PANT

100% COTTON

LIGHT INDIGO, STONEWASH INDIGO

26 27 28 29 30 31 32 33 34 36 38



LIGHT INDIGO



STONEWASH INDIGO

D1 - DENIM COLLECTION

**BENDER DENIM**

**142010080**

FIT: STANDARD FIT

DESCRIPTION: STANDARD FIT 5 POCKET DENIM JEAN

100% COTTON

FADED BLACK, STONE WASHED INDIGO, LIGHT INDIGO

26 27 28 29 30 31 32 33 34 36 38

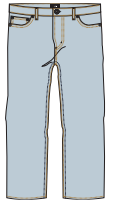
\*PLEASE NOTE UNISEX STYLES ARE SIZED IN MEN'S SIZING\*



FADED BLACK



STONE WASHED INDIGO



LIGHT INDIGO

D1 - DENIM COLLECTION



**HEADWEAR**  
+  
**ACCESSORIES**

家重地  
免進

PINGO

ASS

**MAGIC TIE DYE HAT**

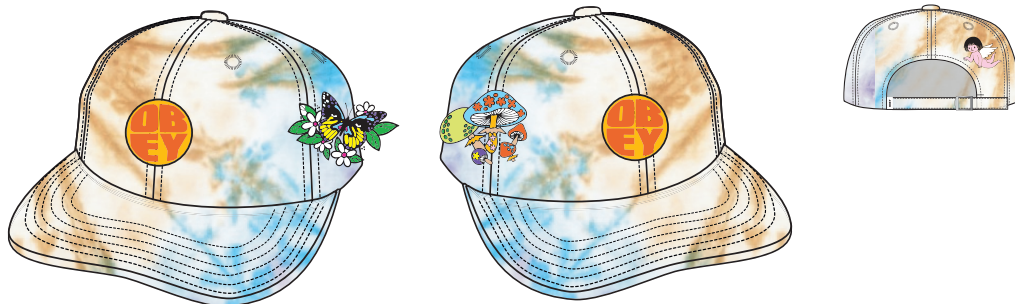
**200140141**

DESCRIPTION: 6 PANEL TIE DYE HAT W/ EMBROIDERY

100% COTTON

TIE DYE MULTI

O/S



TIE DYE MULTI

D1 - HEADWEAR - ACCESSORIES

**MAGIC BUCKET HAT**

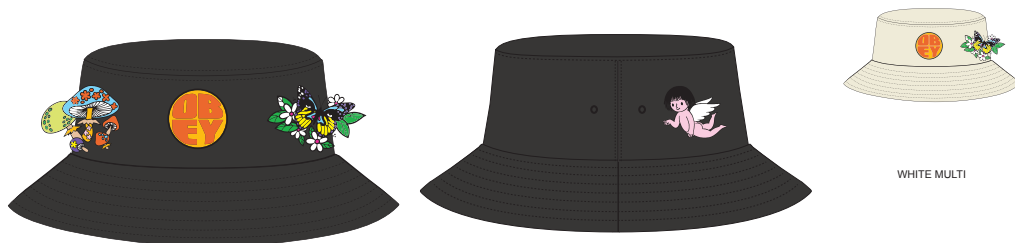
**200520012**

DESCRIPTION: LASSIC "FLAT TOP" TWILL BUCKET HAT W/ WOVEN LABEL

100% COTTON

BLACK MULTI, WHITE MULTI

O/S



WHITE MULTI

BLACK MULTI

D1 - HEADWEAR - ACCESSORIES

**DIGITAL FLORAL BUCKET**

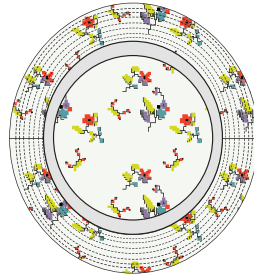
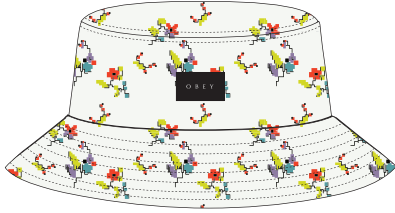
**200520010**

DESCRIPTION: CLASSIC "FLAT TOP" PRINTED LT. CANVAS BUCKET HAT WITH WOVEN LABEL

100% COTTON

WHITE MULTI, BLACK MULTI

O/S



BLACK MULTI

WHITE MULTI

D1 - HEADWEAR - ACCESSORIES

**LOCKDOWN BUCKET HAT**

**200520011**

DESCRIPTION: 6 PANEL BELL SHAPE CORDUROY BUCKET HAT WITH EMBROIDERY

100% COTTON CORDUROY

BLACK MULTI, PALE PURPLE MULTI

O/S



PALE PURPLE MULTI

BLACK MULTI

D1 - HEADWEAR - ACCESSORIES



**VIRGIL BEANIE**

**200030116**

DESCRIPTION: CLASSIC BEANIE IN SOLID COLORS WITH OBEY LABEL

100% ACRYLIC

BLACK, CLAY, PURPLE PASTE, PUREWATER

O/S



BLACK



CLAY



PURPLE PASTE



PUREWATER

D1 - HEADWEAR - ACCESSORIES

**AMY TIE DYE BEANIE**

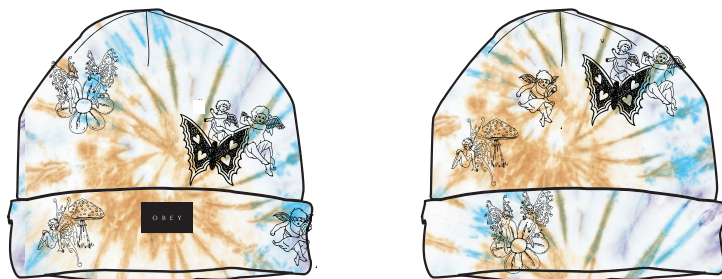
**200030117**

DESCRIPTION: CLASSIC BEANIE W/ EMBROIDERY

100% COTTON

TIE DYE MULTI

O/S



TIE DYE MULTI

D1 - HEADWEAR - ACCESSORIES

**COOP SOCK**

**200260070**

DESCRIPTION: SOCK WITH CUSTOM OBEY JACQUARD STRIPES AND LOGO

85% COTTON 13% POLY 2% ELASTANE

WHITE / BLACK, WHITE / LAVENDER SILK, WHITE / TURQUOISE TONIC

O/S



WHITE / BLACK



WHITE / LAVENDER SILK



WHITE / TURQUOISE TONIC

D1 - ACCESSORIES

**DROP OUT WAISTPACK**

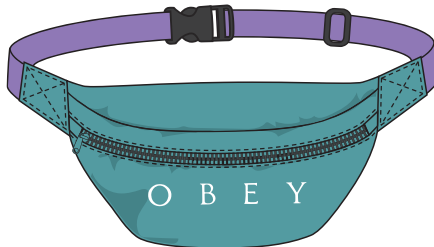
**200010162**

DESCRIPTION: WAISTPACK WITH DOUBLE ZIPPER ENTRY POCKETS AND COMES IN A STURDY FLIGHT SATIN WITH WEBBING STRAPS FEATURES A LARGE OBEY EMBROIDERY

100% NYLON

TEAL MULTI, BLACK

O/S



TEAL MULTI



BLACK

D1 - ACCESSORIES

**BIG BOY BELT**

**100050026**

DESCRIPTION: ADJUSTABLE WEB BELT WITH SILVER HARDWARE AND A OBEY EYE LABEL

60% COTTON / 40% POLYESTER

BLACK, RED GLOW, LAVENDER SILK

O/S



RED GLOW



LAVENDER SILK

BLACK

D1 - ACCESSORIES

**OBEY BLOCK WEB BELT**

**100050034**

DESCRIPTION: ADJUSTABLE WEB BELT WITH PRINT, BUCKET AND EYES LABEL

60% COTTON / 40% POLYESTER

UNBLEACHED, BLACK

O/S



BLACK

UNBLEACHED

D1 - ACCESSORIES

**OBEY BLOCK TRI FOLD WALLET**

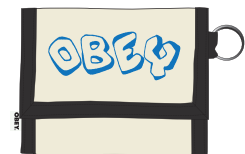
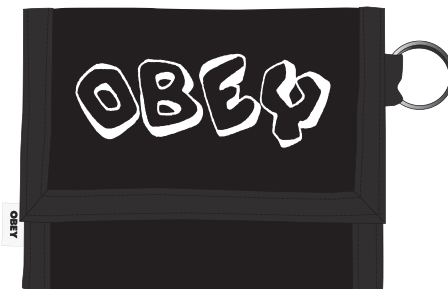
**100310119**

DESCRIPTION: TRI FOLD WALLET WITH MULTIPLE POCKETS, VELCRO CLOSURE AND OBEY EMBROIDERY

100% COTTON TWILL

BLACK, UNBLEACHED

O/S



UNBLEACHED

BLACK

D1 - ACCESSORIES

**FRUITS TOWEL**

**100060002**

DESCRIPTION: PRINTED TOWEL

100% COTTON

PEACH MULTI

O/S



PEACH MULTI

D1 - ACCESSORIES

**HANDS TOWEL**

**100060003**

DESCRIPTION: PRINTED TOWEL

100% COTTON

LAVENDER MULTI

O/S



LAVENDER MULTI

D1 - ACCESSORIES

**OBEY ICON BANDANA**

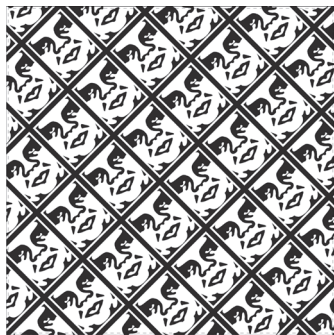
**100020002**

DESCRIPTION: PRINTED BANDANA

100% COTTON

BLACK / WHITE

O/S



BLACK / WHITE

D1 - ACCESSORIES

**OBEY ICON AIR FRESHENER**

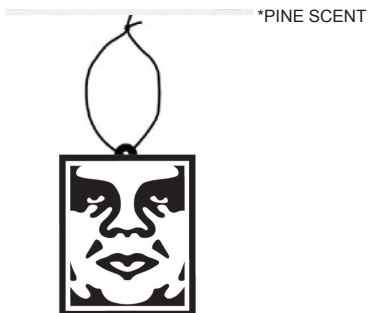
**100680003**

DESCRIPTION: PINE SCENT OBEY ICON FACE AIR FRESHENER

100% PAPER

BLACK MULTI

O/S



BLACK MULTI

D1 - ACCESSORIES

**OBEY ICON METAL KEYCHAIN**

**100160021**

DESCRIPTION: METAL KEYCHAIN WITH ICON

100% METAL

O/S



WHITE

D1 - ACCESSORIE



**ICON PHONE RING**

**100710001**

DESCRIPTION: STEEL WITH ENAMEL PHONE RING ICON FACE

100% STEEL

O/S



WHITE

D1 - ACCESSORIES

**BOLD PEN**

**100770000**

DESCRIPTION: PEN WITH OBEY PRINT

100% PLASTIC

BLACK

O/S



BLACK

D1 - ACCESSORIES

**BOLD BOTTLE**

**100320006**

DESCRIPTION: METAL INSULATED WATER BOTTLE WITH PRINT

SIZE: 16 OZ

100% STEEL

O/S



WHITE

D1 - ACCESSORIES

**SUNSHINE MUG**

**100630004**

DESCRIPTION: PRINTED WHITE MUG

100% CERAMIC

WHITE

O/S



WHITE

D1 - ACCESSORIES

**OBEY RADIO KEYCHAIN**

**100160023**

DESCRIPTION: RUBBER KEYCHAIN WITH PRINT

100% RUBBER

WHITE

O/S



WHITE

D1 - ACCESSORIES

**SUNSHINE AIR FRESHENER**

**100680007**

DESCRIPTION: PINE SCENT OBEY ICON FACE AIR FRESHENER

100% PAPER

WHITE

O/S



\*PINE SCENT

WHITE

D1 - ACCESSORIES

**BULLDOG AIR FRESHENER**

**100680006**

DESCRIPTION: PINE SCENT OBEY ICON FACE AIR FRESHENER

100% PAPER

WHITE

O/S



\*PINE SCENT



WHITE

D1 - ACCESSORIES

**STICKER PACK 5**

**100270012**

DESCRIPTION: ASSORTED STICKERS FOR THE OBEY FIENDS. SPREAD IT! (STICKERS MAY VARY FROM CATALOG PHOTO)

ASSORTED

O/S



ASSORTED

D1 - ACCESSORIES

**STICKER PACK 2**

**100270001**

DESCRIPTION: ASSORTED STICKERS FOR THE OBEY FIENDS. SPREAD IT! (STICKERS MAY VARY FROM CATALOG PHOTO)

ASSORTED

O/S



ASSORTED

D1 - ACCESSORIES

**OBEY BOLD**

**326002349**

DESCRIPTION: CORK BLOCK WITH BOLD OBEY PRINT

100% CORK

O/S

\* THIS ITEM IS POP, AND INTENDED TO BE USED IN STORE DISPLAY. NOT FOR RESALE



CORK

D1 - POP

**LARGE ICON FACE FRAMED PRINT**

**326000174**

DESCRIPTION: FRAMED PRINT

ASSORTED

O/S

\* THIS ITEM IS POP, AND INTENDED TO BE USED IN STORE DISPLAY. NOT FOR RESALE

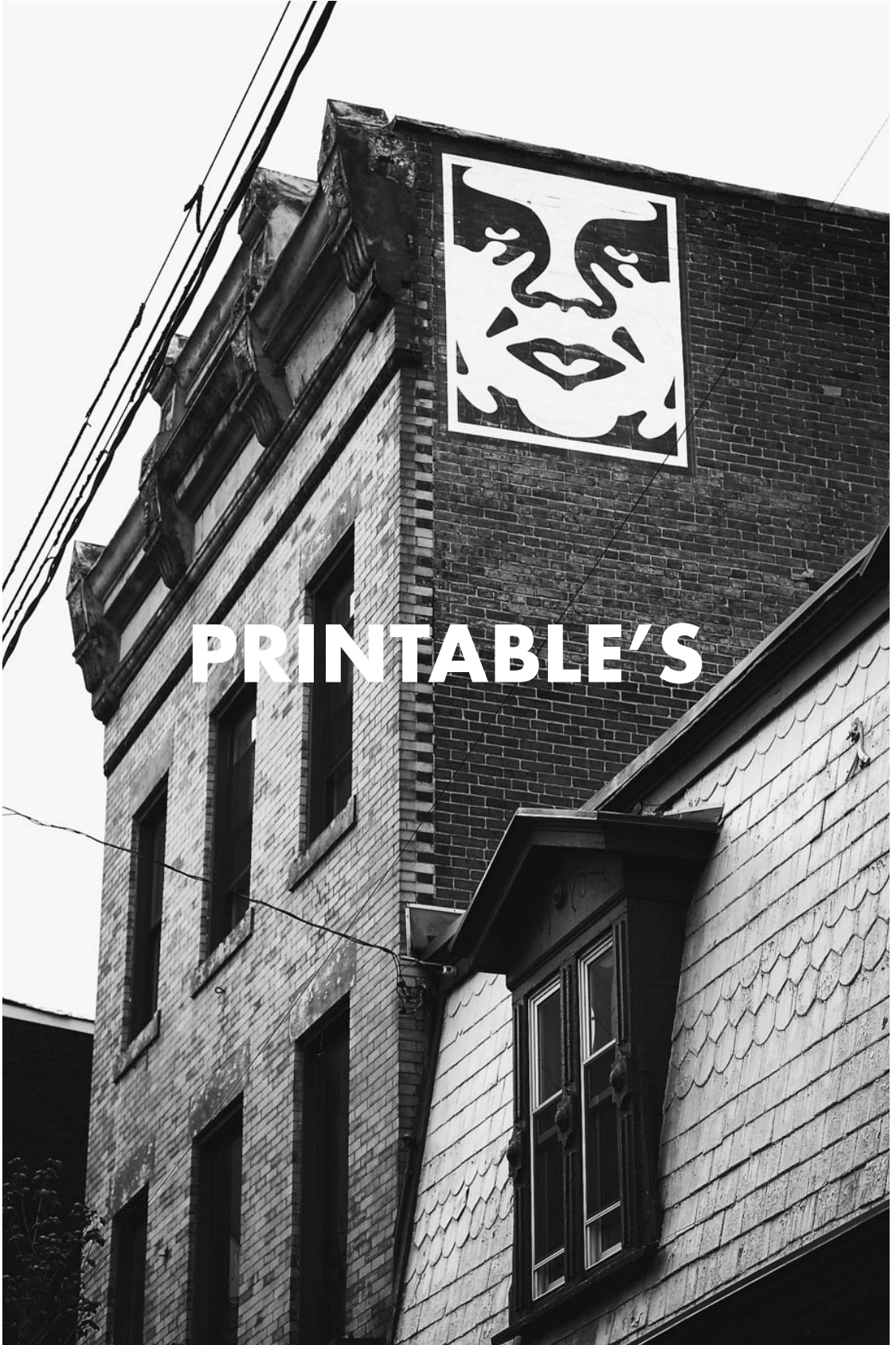


ASSORTED

D1 - POP



# PRINTABLE'S



**OBEY TAG**

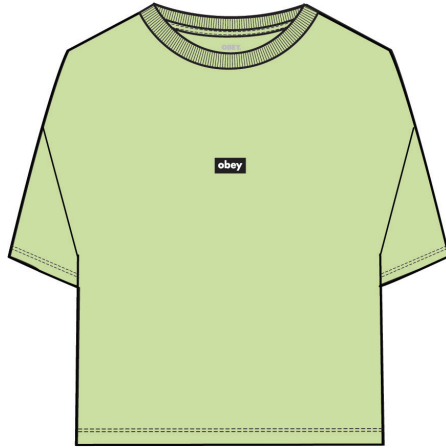
**267621986**

DESCRIPTION: HEAVYWEIGHT BOX FIT CROP T-SHIRT

CONTENT: 100% COTTON

ALOE GEL, LAVENDER SILK, WHITE

XS S M L XL



ALOE GEL



LAVENDER SILK



WHITE

D1 - CUSTOM CROP TEE

**GUM LOGO**

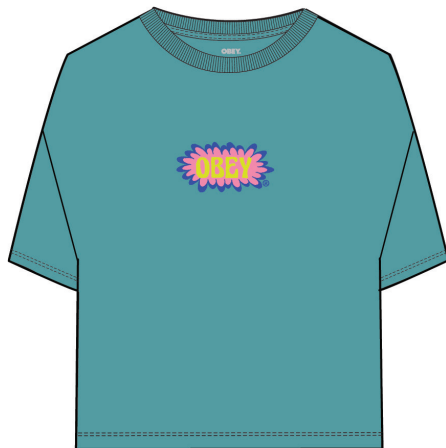
**267622088**

DESCRIPTION: HEAVYWEIGHT BOX FIT CROP T-SHIRT

CONTENT: 100% COTTON

TURQUOISE TONIC, OFF BLACK, PINK AMETHYST

XS S M L XL



TURQUOISE TONIC



OFF BLACK



PINK AMETHYST

D1 - CUSTOM CROP TEE



**OBEY SAYS BE AN ANGEL**

**267622089**

DESCRIPTION: HEAVYWEIGHT BOX FIT CROP T-SHIRT

CONTENT: 100% COTTON

SHORTBREAD, TURQUOISE TONIC, ALOE GEL

**XS S M L XL**



SHORTBREAD



TURQUOISE TONIC



ALOE GEL

D1 - CUSTOM CROP TEE

**OBEY HANGING CHERRIES**

**267622090**

DESCRIPTION: HEAVYWEIGHT BOX FIT CROP T-SHIRT

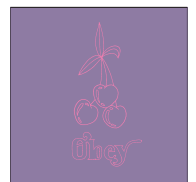
CONTENT: 100% COTTON

OFF BLACK, LAVENDER SILK, WHITE

**XS S M L XL**



OFF BLACK



LAVENDER SILK



WHITE

D1 - CUSTOM CROP TEE

**SUNSHINE VISUALS**

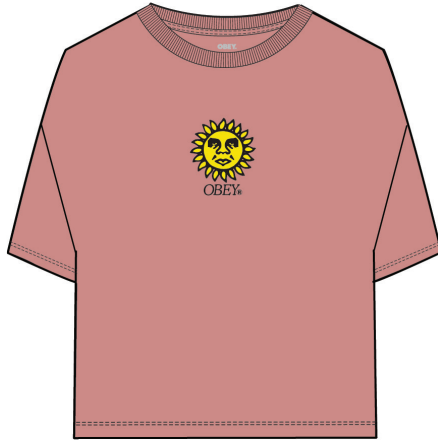
**267622091**

DESCRIPTION: HEAVYWEIGHT BOX FIT CROP T-SHIRT

CONTENT: 100% COTTON

PINK AMETHYST, ALOE GEL, WHITE

**XS S M L XL**



PINK AMETHYST



ALOE GEL



WHITE

D1 - CUSTOM CROP TEE

**OBEY CHAINY**

**267622092**

DESCRIPTION: HEAVYWEIGHT BOX FIT CROP T-SHIRT

CONTENT: 100% COTTON

LAVENDER SILK, TURQUOISE TONIC, WHITE

**XS S M L XL**



LAVENDER SILK



TURQUOISE TONIC



WHITE

D1 - CUSTOM CROP TEE

**OBEY TAG**

**267711986**

DESCRIPTION: TIE DYE HEAVYWEIGHT BOX FIT CROP T-SHIRT

CONTENT: 100% COTTON

CUCUMBER SOFT & CLOUDY, LAVENDER SILK SOFT & CLOUDY

**XS S M L XL**



CUCUMBER SOFT & CLOUDY



LAVENDER SILK SOFT & CLOUDY

D1 - TIE DYE CUSTOM CROP TEE

**SUNSHINE VISUALS**

**267712091**

DESCRIPTION: TIE DYE HEAVYWEIGHT BOX FIT CROP T-SHIRT

CONTENT: 100% COTTON

LAVENDER SILK SOFT & CLOUDY, CUCUMBER SOFT & CLOUDY

**XS S M L XL**



LAVENDER SILK SOFT & CLOUDY



CUCUMBER SOFT & CLOUDY

D1 - TIE DYE CUSTOM CROP TEE

**OBEY TAG**

**267611986**

DESCRIPTION: HEAVYWEIGHT RELAXED LONG SLEEVE T-SHIRT

CONTENT: 100% COTTON

SHORTBREAD, OFF BLACK, TURQUOISE TONIC

XS S M L XL



SHORTBREAD



OFF BLACK



TURQUOISE TONIC

D1 - CUSTOM BOX L/S TEE

**PRESSED DAISIES**

**267612944**

DESCRIPTION: HEAVYWEIGHT RELAXED LONG SLEEVE T-SHIRT

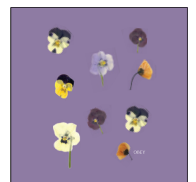
CONTENT: 100% COTTON

GINGER BISCUIT, LAVENDER SILK, WHITE

XS S M L XL



GINGER BISCUIT



LAVENDER SILK



WHITE

D1 - CUSTOM BOX L/S TEE

**OBEY SERAPHIM**

**267612094**

DESCRIPTION: HEAVYWEIGHT RELAXED LONG SLEEVE T-SHIRT

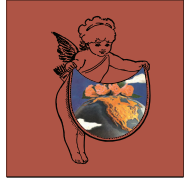
CONTENT: 100% COTTON

TURQUOISE TONIC, GINGER BISCUIT, WHITE

**XS S M L XL**



TURQUOISE TONIC



GINGER BISCUIT



WHITE

D1 - CUSTOM BOX L/S TEE

**OBEY FLOWER FAIRIES**

**267612945**

DESCRIPTION: HEAVYWEIGHT RELAXED LONG SLEEVE T-SHIRT

CONTENT: 100% COTTON

LAVENDER SILK, SHORTBREAD, WHITE

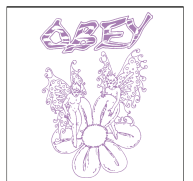
**XS S M L XL**



LAVENDER SILK



SHORTBREAD



WHITE

D1 - CUSTOM BOX L/S TEE

**OBEY TAG**

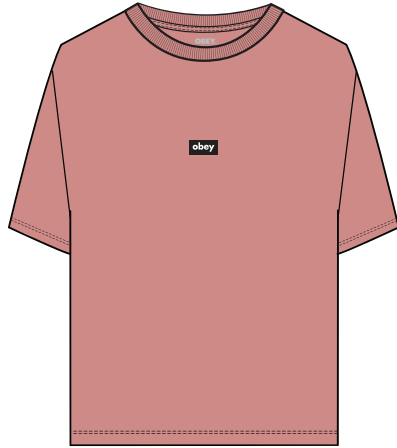
**264641986**

DESCRIPTION: VINTAGE OVERSIZED BOX T-SHIRT

CONTENT: 100% COTTON

PINK AMETHYST, OFF BLACK, TURQUOISE TONIC

**XS S M L XL**



PINK AMETHYST



OFF BLACK



TURQUOISE TONIC

D1 - VINTAGE BOX TEE

**OBEY SERAPHIM 2**

**264642096**

DESCRIPTION: VINTAGE OVERSIZED BOX T-SHIRT

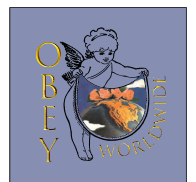
CONTENT: 100% COTTON

WHITE, IRIS FLOWER, ALOE GEL

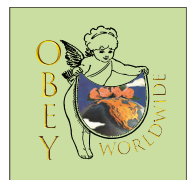
**XS S M L XL**



WHITE



IRIS FLOWER



ALOE GEL

D1 - VINTAGE BOX TEE



**PRESSED DAISIES**

**264642944**

DESCRIPTION: VINTAGE OVERSIZED BOX T-SHIRT

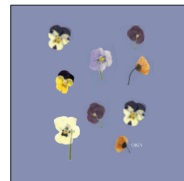
CONTENT: 100% COTTON

ALOE GEL, IRIS FLOWER, WHITE

XS S M L XL



ALOE GEL



IRIS FLOWER



WHITE

D1 - VINTAGE BOX TEE

**ROMAN STATUE**

**264642097**

DESCRIPTION: PIGMENT DYED OVERSIZED BOX T-SHIRT

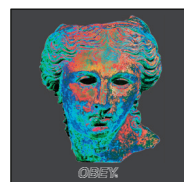
CONTENT: 100% COTTON

TURQUOISE TONIC, OFF BLACK, IRIS FLOWER

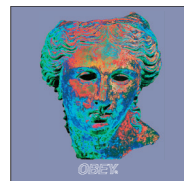
XS S M L XL



TURQUOISE TONIC



OFF BLACK



IRIS FLOWER

D1 - VINTAGE BOX TEE

**OBEY BRAIN FART**

**264642098**

DESCRIPTION: VINTAGE OVERSIZED BOX T-SHIRT

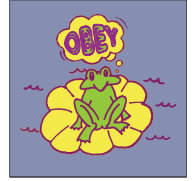
CONTENT: 100% COTTON

CLAY, IRIS FLOWER, ALOE GEL

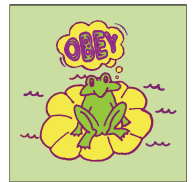
**XS S M L XL**



CLAY



IRIS FLOWER



ALOE GEL

D1 - VINTAGE BOX TEE

**OBEY FLOWER FAIRIES**

**264642087**

DESCRIPTION: PIGMENT DYED OVERSIZED BOX T-SHIRT

CONTENT: 100% COTTON

IRIS FLOWER, ALOE GEL, WHITE

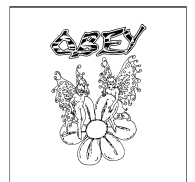
**XS S M L XL**



IRIS FLOWER



ALOE GEL



WHITE

D1 - VINTAGE BOX TEE

**WORLDWIDE MUSHROOMS**

**264642099**

DESCRIPTION: VINTAGE OVERSIZED BOX T-SHIRT

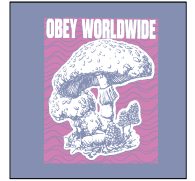
CONTENT: 100% COTTON

OFF BLACK, IRIS FLOWER, CLAY

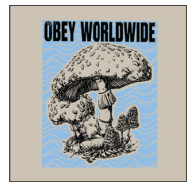
**XS S M L XL**



OFF BLACK



IRIS FLOWER



CLAY

D1 - VINTAGE BOX TEE

**SOCIAL BUTTERFLY**

**264642100**

DESCRIPTION: PIGMENT DYED OVERSIZED BOX T-SHIRT

CONTENT: 100% COTTON

OFF BLACK, IRIS FLOWER, TURQUOISE TONIC

**XS S M L XL**



OFF BLACK



IRIS FLOWER



TURQUOISE TONIC

D1 - VINTAGE BOX TEE

**OBEY FLOWER FAIRIES**

**263662087**

DESCRIPTION: TIE DYE VINTAGE OVERSIZED BOX T-SHIRT

CONTENT: 100% COTTON

TURQUOISE TONIC OMBRE DIP, IRIS FLOWER OMBRE DIP

**XS S M L XL**



TURQUOISE TONIC OMBRE DIP



IRIS FLOWER OMBRE DIP

D1 - TIE DYE VINTAGE BOX TEE

**WORLDWIDE MUSHROOMS 2**

**263662101**

DESCRIPTION: TIE DYE VINTAGE OVERSIZED BOX T-SHIRT

CONTENT: 100% COTTON

IRIS FLOWER OMBRE DIP, TURQUOISE TONIC OMBRE DIP

**XS S M L XL**



IRIS FLOWER OMBRE DIP



TURQUOISE TONIC OMBRE DIP

D1 - TIE DYE VINTAGE BOX TEE

**OBEY GROWTH**

**263452102**

DESCRIPTION: PIGMENT DYED OVERSIZED BOX T-SHIRT

CONTENT: 100% COTTON

CUCUMBER, RABBITS PAW, WHITE

**XS S M L XL**



CUCUMBER



RABBITS PAW



WHITE

D1 - PIGMENT CHOICE BOX TEE

**LOUNGING NUDE**

**263452103**

DESCRIPTION: PIGMENT DYED OVERSIZED BOX T-SHIRT

CONTENT: 100% COTTON

OPAL, SAGO, WHITE

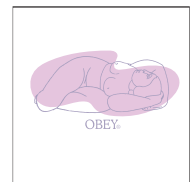
**XS S M L XL**



OPAL



SAGO



WHITE

D1 - PIGMENT CHOICE BOX TEE

**OBEY KIYOSHI**

**263452104**

DESCRIPTION: PIGMENT DYED OVERSIZED BOX T-SHIRT

CONTENT: 100% COTTON

RABBITS PAW, OFF BLACK, WHITE

XS S M L XL



RABBITS PAW



OFF BLACK



WHITE

D1 - PIGMENT CHOICE BOX TEE

**MAXINE**

**263452884**

DESCRIPTION: PIGMENT DYED OVERSIZED BOX T-SHIRT

CONTENT: 100% COTTON

OFF BLACK, CUCUMBER, WHITE

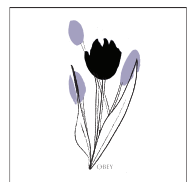
XS S M L XL



OFF BLACK



CUCUMBER



WHITE

D1 - PIGMENT CHOICE BOX TEE



**OBEY PARROT**

**263452106**

DESCRIPTION: PIGMENT DYED OVERSIZED BOX T-SHIRT

CONTENT: 100% COTTON

PINK CLAY, OPAL, WHITE

XS S M L XL



PINK CLAY



OPAL



WHITE

D1 - PIGMENT CHOICE BOX TEE

**FRUIT BOWL**

**263452107**

DESCRIPTION: PIGMENT DYED OVERSIZED BOX T-SHIRT

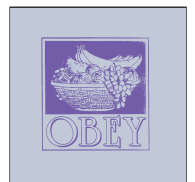
CONTENT: 100% COTTON

WHITE, OPAL, PINK CLAY

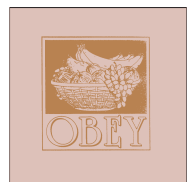
XS S M L XL



WHITE



OPAL



PINK CLAY

D1 - PIGMENT CHOICE BOX TEE

**HONEY BEAR**

**263452108**

DESCRIPTION: PIGMENT DYED OVERSIZED BOX T-SHIRT

CONTENT: 100% COTTON

OPAL, CUCUMBER, WHITE

XS S M L XL



OPAL



CUCUMBER



WHITE

D1 - PIGMENT CHOICE BOX TEE

**OBEY NURTURE**

**263452109**

DESCRIPTION: PIGMENT DYED OVERSIZED BOX T-SHIRT

CONTENT: 100% COTTON

WHITE, OFF BLACK, RABBITS PAW

XS S M L XL



WHITE



OFF BLACK



RABBITS PAW

D1 - PIGMENT CHOICE BOX TEE

**SMELLIN DAISIES**

**263452110**

DESCRIPTION: PIGMENT DYED OVERSIZED BOX T-SHIRT

CONTENT: 100% COTTON

CUCUMBER, OFF BLACK, WHITE

XS S M L XL



CUCUMBER



OFF BLACK



WHITE

D1 - PIGMENT CHOICE BOX TEE

**OBEY GREEN POWER**

**263452111**

DESCRIPTION: PIGMENT DYED OVERSIZED BOX T-SHIRT

CONTENT: 100% COTTON

SAGO, OFF BLACK, OPAL

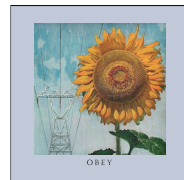
XS S M L XL



SAGO



OFF BLACK



OPAL

D1 - PIGMENT CHOICE BOX TEE

**OBEY GROWTH**

**263492102**

DESCRIPTION: TIE DYED PIGMENT DYED OVERSIZED BOX T-SHIRT

CONTENT: 100% COTTON

IRS FLOWER, PASTEL TIE DYE, PINK CLAY PASTEL TIE DYE

**XS S M L XL**



IRIS FLOWER PASTEL TIE DYE



PINK CLAY PASTEL TIE DYE

D1 - TIE DYE PIGMENT CHOICE BOX TEE

**OBEY PARROT**

**263492106**

DESCRIPTION: TIE DYED PIGMENT DYED OVERSIZED BOX T-SHIRT

CONTENT: 100% COTTON

PINK CLAY PASTEL TIE DYE, IRIS FLOWER PASTEL TIE DYE

**XS S M L XL**



PINK CLAY PASTEL TIE DYE



IRIS FLOWER PASTEL TIE DYE

D1 - TIE DYE PIGMENT CHOICE BOX TEE

**OBEY FREEDOM**

**263502112**

DESCRIPTION: ORGANIC LIGHTWEIGHT CREWNECK T-SHIRT

CONTENT: 100% ORGANIC COTTON

GINGER BISCUIT, TURQUOISE TONIC, SAGO

XS S M L XL



GINGER BISCUIT



TURQUOISE TONIC



SAGO

D1 - ORGANIC VINTAGE CREW

**FREEDOVE**

**263502113**

DESCRIPTION: ORGANIC LIGHTWEIGHT CREWNECK T-SHIRT

CONTENT: 100% ORGANIC COTTON

RABBITS PAW, TURQUOISE TONIC, SAGO

XS S M L XL



RABBITS PAW



TURQUOISE TONIC



SAGO

D1 - ORGANIC VINTAGE CREW

**OBEY SUBVERT COMMAND**

**263502114**

DESCRIPTION: ORGANIC LIGHTWEIGHT CREWNECK T-SHIRT

CONTENT: 100% ORGANIC COTTON

SAGO, OFF BLACK, GINGER BISCUIT

XS S M L XL



SAGO



OFF BLACK



GINGER BISCUIT

D1 - ORGANIC VINTAGE CREW

**OBEY GREEN EARTH**

**263502115**

DESCRIPTION: ORGANIC LIGHTWEIGHT CREWNECK T-SHIRT

CONTENT: 100% ORGANIC COTTON

TURQUOISE TONIC, GINGER BISCUIT, SAGO

XS S M L XL



TURQUOISE TONIC



GINGER BISCUIT



SAGO

D1 - ORGANIC VINTAGE CREW

**FREEDOVE**

**263522113**

DESCRIPTION: TIE DYED ORGANIC LIGHTWEIGHT CREWNECK T-SHIRT

CONTENT: 100% ORGANIC COTTON

ALOE GEL TIE DYE, PINK AMETHYST TIE DYE

XS S M L XL



ALOE GEL TIE DYE



PINK AMETHYST TIE DYE

D1 - TIE DYE ORGANIC VINTAGE CREW

**OBEY GREEN EARTH**

**263522115**

DESCRIPTION: TIE DYED ORGANIC LIGHTWEIGHT CREWNECK T-SHIRT

CONTENT: 100% ORGANIC COTTON

PINK AMETHYST TIE DYE, OPAL TIE DYE

XS S M L XL



PINK AMETHYST TIE DYE



OPAL TIE DYE

D1 - TIE DYE ORGANIC VINTAGE CREW



**OBEY GROWTH**

**263412102**

DESCRIPTION: TANK TOP

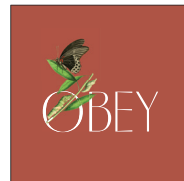
CONTENT: 100% COTTON

WHITE, GINGER BISCUIT, PINK CLAY

XS S M L XL



WHITE



GINGER BISCUIT



PINK CLAY

D1 - LUNA TANK

**SUNSHINE VISUALS**

**263412091**

DESCRIPTION: TANK TOP

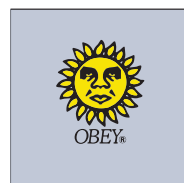
CONTENT: 100% COTTON

RABBITS PAW, OPAL, WHITE

XS S M L XL



RABBITS PAW



OPAL



WHITE

D1 - LUNA TANK

**OBEY HANGING CHERRIES**

**263412090**

DESCRIPTION: TANK TOP

CONTENT: 100% COTTON

PINK CLAY, WHITE, GINGER BISCUIT

**XS S M L XL**



PINK CLAY



WHITE



GINGER BISCUIT

D1 - LUNA TANK

**SMELLIN DAISIE 2**

**263412116**

DESCRIPTION: TANK TOP

CONTENT: 100% COTTON

OPAL, PINK CLAY, WHITE

**XS S M L XL**



OPAL



PINK CLAY



WHITE

D1 - LUNA TANK

**SUNSHINE VISUALS**

**263672091**

DESCRIPTION: TIE DYE TANK TOP

CONTENT: 100% COTTON

TURQUOISE TONIC SPACED BLOTCH, MANGO SORBET SPACED BLOTCH

**XS S M L XL**



TURQUOISE TONIC SPACED BLOTCH



MANGO SORBET SPACED BLOTCH

D1 - TIE DYE LUNA TANK

**SMELLIN DAISIES 2**

**263672116**

DESCRIPTION: TIE DYE TANK TOP

CONTENT: 100% COTTON

MANGO SORBET SPACED BLOTCH, TURQUOISE TONICE SPACED BLOTCH

**XS S M L XL**



MANGO SORBET SPACED BLOTCH



TURQUOISE TONIC SPACED BLOTCH

D1 - TIE DYE LUNA TANK

**OBEY MEDIUM BOLD**

**213642105**

DESCRIPTION: PREMIUM FIT RELAXED HOODIE

CONTENT: 80% COTTON 20% POLY

CUCUMBER, BLACK, LAVENDER SILK, SAGO

XS S M L XL



CUCUMBER



BLACK



LAVENDER SILK



SAGO

D1 - PREMIUM FIT HOOD

**OBEY CHAINY**

**213642092**

DESCRIPTION: PREMIUM FIT RELAXED HOODIE

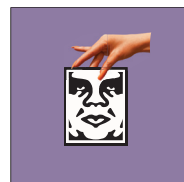
CONTENT: 80% COTTON 20% POLY

BLACK, LAVENDER SILK, SAGO

XS S M L XL



BLACK



LAVENDER SILK



SAGO

D1 - PREMIUM FIT HOOD

**FRUIT BOWL**

**213642107**

DESCRIPTION: PREMIUM FIT RELAXED HOODIE

CONTENT: 80% COTTON 20% POLY

SAGO, LAVENDER SILK, CUCUMBER

XS S M L XL



SAGO



LAVENDER SILK



CUCUMBER

D1 - PREMIUM FIT HOOD

**OBEY FOR THE PEOPLE**

**213642095**

DESCRIPTION: PREMIUM FIT RELAXED HOODIE

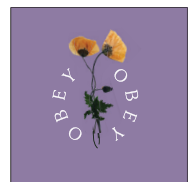
CONTENT: 80% COTTON 20% POLY

BLACK, LAVENDER SILK, CUCUMBER

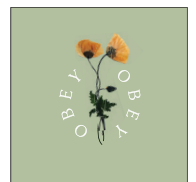
XS S M L XL



BLACK



LAVENDER SILK



CUCUMBER

D1 - PREMIUM FIT HOOD

**SOCIAL BUTTERFLY**

**213642100**

DESCRIPTION: PREMIUM FIT RELAXED HOODIE

CONTENT: 80% COTTON 20% POLY

LAVENDER SILK, CUCUMBER, SAGO

XS S M L XL



LAVENDER SILK



CUCUMBER



SAGO

D1 - PREMIUM FIT HOOD

**OBEY SAYS BE AN ANGEL**

**211962089**

DESCRIPTION: TIE DYE HEAVYWEIGHT FIT HOOD

CONTENT: 80% COTTON 20% POLY

IRIS FLOWER PASTEL TIE DYE

XS S M L XL



IRIS FLOWER PASTEL TIE DYE

D1 - HEAVYWEIGHT TIE DYE HOOD

**OBEY MEDIUM BOLD**

**213652105**

DESCRIPTION: PREMIUM FIT RELAXED CREW

CONTENT: 80% COTTON 20% POLY

LAVENDER SILK, BLACK, CUCUMBER

**XS S M L XL**



LAVENDER SILK



BLACK



CUCUMBER

D1 - PREMIUM FIT CREW

**HONEY BEAR**

**213652108**

DESCRIPTION: PREMIUM FIT RELAXED CREW

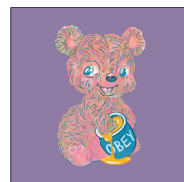
CONTENT: 80% COTTON 20% POLY

SAGO, LAVENDER SILK

**XS S M L XL**



SAGO



LAVENDER SILK

D1 - PREMIUM FIT CREW



**OBEY GREEN POWER**

**213652111**

DESCRIPTION: PREMIUM FIT RELAXED CREW

CONTENT: 80% COTTON 20% POLY

LAVENDER SILK, SAGO

**XS S M L XL**



LAVENDER SILK



SAGO

D1 - PREMIUM FIT CREW

**OBEY BRAIN FART**

**213652098**

DESCRIPTION: PREMIUM FIT RELAXED CREW

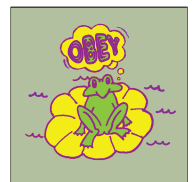
CONTENT: 80% COTTON 20% POLY

BLACK, CUCUMBER

**XS S M L XL**



BLACK



CUCUMBER

D1 - PREMIUM FIT CREW

**SMELLIN DAISIES**

**213652110**

DESCRIPTION: PREMIUM FIT RELAXED CREW

CONTENT: 80% COTTON 20% POLY

CUCUMBER, SAGO

XS S M L XL



CUCUMBER



SAGO

D1 - PREMIUM FIT CREW

**OBEY FLOWER FAIRIES**

**211912945**

DESCRIPTION: TIE DYE PREMIUM FIT RELAXED CREW

CONTENT: 80% COTTON 20% POLY

SORBET PASTEL TIE DYE

XS S M L XL



SORBET PASTEL TIE DYE

D1 - TIE DYE PREMIUM FIT CREW